

Physician Responses to Financial Incentives: Evidence from Hospital Discharge Data

Kate Ho and Ariel Pakes

April 2011

Abstract

We investigate whether patients whose physicians have a financial incentive to control costs receive care at lower-priced hospitals than similar patients. Using California hospital discharge data from 2003, we first estimate multinomial logit demand models that include price in the choice equation. We obtain price coefficients which differ in sign with the severity of the patient's condition on entering the hospital. We then develop an estimator based on inequalities that addresses endogeneity concerns by matching patients based on insurer and severity and then averaging. This produces bounds on the price coefficient (rather than point estimates), and the bounds indicate that the impact of price varies with the capitation rate of the patient's insurance plan; higher capitation rate plans are more averse to high priced hospitals.

PRELIMINARY AND INCOMPLETE: PLEASE DO NOT CITE

1 Introduction

The health reforms signed into law in March 2010 include provisions to expand health insurance coverage, subsidize premiums and increase consumer choice. The costs of these provisions are partially offset by increased taxes and fees on various entities (including new Medicare taxes on high-income brackets and fees on medical devices and pharmaceuticals). In the long term, however, many policymakers believe that cost controls rely on health insurance programs such as Medicare and Medicaid moving away from traditional fee-for-service payment systems, which reward providers that generate high service volume, towards systems that encourage them to use resources efficiently while still providing high-quality services. The reforms begin this shift by introducing provisions to make providers who are organized as accountable care organizations (ACOs) eligible, from 2012 onwards, to share in any cost savings they achieve for the Medicare and Medicaid programs. In addition the reforms introduce pilot arrangements under which physicians providing Medicaid services will receive bundled payments that pull together fees for the components of a particular episode of care. For example under these arrangements the obstetrician's and the hospital's payments for a labor and birth episode will be combined into a single fee that is shared by the providers.¹ The goal of

¹ Medicare already bundles payments to hospitals through the D.R.G. (Diagnosis Related Group) payment system. Bundled payments to all payers for larger episodes of care have been piloted in the Medicare program, for example

both initiatives is to identify and implement a provider payment system that reduces the growth in medical care costs without compromising the quality of care.

The health policy literature has noted that similar cost control incentives are currently utilized by some health maintenance organizations (HMOs) in California and elsewhere.² However, relatively little is known about the effects of such incentive schemes. While numerous previous papers document low costs in HMOs compared to other insurance types, there is little evidence on the mechanisms used to reduce costs and the dimensions on which physicians respond to cost-control incentives. In this paper we use hospital discharge data from California to investigate whether physicians are more likely to refer patients to lower-priced hospitals when insurers give them a financial incentive to do so. This particular mechanism is important for two reasons. First if the mechanism is effective it has a direct effect on hospital costs, and hospital costs make up over 30% of national health care spending (Kaiser Family Foundation, 2007 data). Second, if hospital admissions are affected by their prices hospitals should take this effect into consideration when they negotiate prices with HMO's, and this should affect the outcome from those negotiations. Those outcomes are important determinants of the returns to both the hospital's investments and to engaging in market changing activities such as mergers. In particular an analysis of mergers which does not take into account the effect of price increases in lowering admissions is likely to over-estimate the price increases that will result from a merger, and a demand analysis that does not take into account price effects will over-estimate a hospital's incentives to invest in new high-cost technologies and under-estimate its incentives to invest in cost-reducing technologies.

The process by which a patient chooses a hospital involves multiple players. Decisions are made by referring physicians in consultation with their patients. HMOs and other insurers attempt to influence physicians' choices through direct financial incentives and also less directly by making physicians' promotion on the pay scale contingent (formally or informally) on their management of costs. Direct financial incentives utilized in California include capitation contracts under which referring physicians bear financial risk for services they provide and global capitation contracts where they also bear risk for hospital services their patients receive from other providers. In 2003 73% of payments made to primary physicians by the six largest carriers in the data were capitation payments; the proportions varied substantially across carriers from 97% for Pacificare to 38% for Blue Cross.³ However if higher quality hospitals negotiate higher prices, both insurers and physicians face a trade-off between incentives to reduce costs and the impact of any negative health outcome on their reputation. Of course the likely reputational impact of a particular hospital choice may vary with both the severity of the patient's condition and the quality of the hospital's services for that condition.

This paper investigates the response of patients' hospital referrals to physician cost control in the Medicare Participating Heart Bypass Center demonstration (see Cromwell et al 1998) and in the Acute Care Episode demonstration, currently being run, which expands the model to other types of discharges.

²See, for example, Hammelman et al (2009) for further information.

³Our dataset does not distinguish between capitation and global capitation contracts. However, for reasons discussed below, physicians involved in either type of capitation contract have an incentive to reduce the costs of their patients' hospital inpatient stays.

incentives. We use hospital discharge data for privately insured Health Maintenance Organization (HMO) enrollees from California in 2003 and focus on a single diagnosis: the labor/birth episode for pregnant women. Our dataset does not identify the physician referring each patient to hospital; we therefore cannot directly observe physician behavior. We ask whether patients in high-capitation insurers are referred to lower-priced hospitals, all else equal, than other patients, and interpret our results as suggestive evidence regarding the effect of interest.

The analysis builds on the previous literature on hospital demand. Previous papers consider the factors affecting patients' hospital choices in some detail but almost exclusively make the simplifying assumption that the patient makes her choice of hospital without any input from the insurer or the provider. In particular, the price paid by the insurer to the hospital is not included in the utility equation. We estimate models of hospital demand that allow this price to influence hospital choices, starting with discrete choice logit models that mirror the previous literature.

There are at least two problems with this procedure. The first is a price measurement issue: price is defined as a hospital "list price" for the relevant services multiplied by a discount that differs across insurer-hospital pairs but that we observe only at the hospital level. Our baseline price variable is calculated using the observed hospital-level discount; later in the paper we use additional data to estimate the variation in discounts across insurers and incorporate this into the price measure. The second problem relates to price endogeneity (the price of a particular procedure may be correlated with an unobserved hospital quality for that procedure). It is important to include extensive controls for hospital quality to address this issue. We would ideally include interactions between hospital fixed effects and detailed measures of patient diagnosis or severity, since the physician's preference for quality of the hospital may depend on the severity of the patient's illness and/or quality may vary across diagnoses within a hospital. Fully flexible controls are not feasible in the logit model so we expect the price coefficient to be biased upwards.

When we estimate a multinomial logit on data that pools all labor and birth discharges we obtain a positive and significant coefficient on price. However, when we narrow the sample to the least sick women the price coefficient becomes negative, consistent with the hypothesis that price is correlated with unobserved quality of hospital and quality is more important for more severe medical cases. We then allow the price coefficient to vary by insurance carrier and find that the carriers with the highest proportion of payments to physicians made through capitation contracts have negative significant price coefficients while other carriers with a higher proportion of fee-for-service contracts have insignificant coefficients on price.

Next we develop a methodology based on moment inequalities to address the joint problems of measurement errors in prices and price endogeneity inherent in the logit model. We replace the logit functional form assumptions with the assumption that the hospital choice equation is additively separable in price, a non-parametric function of the severity of the patient's illness and the quality of the hospital's services for that severity, and distance to the hospital (or, more generally, a measure of the convenience of the hospital for the particular patient). The behavioral assumption is that the hospital chosen for each patient generates greater expected utility than any of the other hospitals

in her choice set. This generates an inequality for each patient and each of her alternative hospitals (each hospital that is offered by her insurer, is within reasonable travel distance of her home, and that she did not choose). We identify pairs of patients who have the same severity and are enrollees in the same insurer but who chose different hospitals. By defining the alternative of each patient as the chosen hospital of the other and summing the two patients' inequalities, we difference out the severity-hospital interaction terms from the utility equation. By summing the resulting inequalities over patients and hospitals we mitigate the effects of errors in price measurement. The result is a relatively straightforward estimator of bounds on the (normalized) price coefficient.

The estimated bounds indicate negative price coefficients for the four insurers with the highest proportion of capitated payments. The bounds on the price coefficient for the two insurers with the lowest capitation rates cross zero. The bounds become narrower when we allow the negotiated discounts to differ across insurers, as expected since we are reducing specification error in the price variable, but the overall story changes very little. Indeed we show that the overall story seems robust to the particular specification used in the estimation. Our general conclusion is that our results are consistent with physicians in California responding to hospital prices when they face financial incentives to do so. We are in the process of analyzing two more detailed implications of our findings⁴. The first is a quantification of just how large a savings in hospital costs could be obtained from a change which made all the insurers in our data set have capitation rates similar to those of the highest capitation insurers. The second is an analysis of the estimated bounds on the hospital-quality/severity interactions that emanate from our procedure.

The remainder of the paper is structured as follows. In Section 2 we briefly discuss the relevant previous literature. Section 3 describes important features of the market, particularly those relevant to California and Section 4 describes the data. Section 5 sets out the full model we wish to analyze, Section 6 and 7 summarize the restrictions required for the logit and inequalities methods and set out their results, and Section 8 concludes.

2 Previous Literature

The first relevant set of previous papers considers HMO gatekeeping and cost controls. Glied (2000) summarizes this literature. Her summary suggests that HMOs have lower inpatient admissions and costs than other insurers. However the study results are often difficult to interpret because, for example, physicians and patients who prefer a low treatment intensity may select into HMOs.⁵ There are a few more recent studies that consider similar questions. For example, Cutler et al (2000) compare the treatment of heart disease in HMOs and traditional insurance plans and find that

⁴In fact we uncover the preferences of a composite agent, comprising the patient and her physician. However, since patients have no reason to respond to the price paid by the insurer on their behalf, we interpret the price coefficient as information on the physician responses to price differences between hospitals. Regardless of the veracity of this assertion it is the composite agent whose preferences that we do recover that determine the effect of changes in hospital or plan characteristics on hospital choices.

⁵Gosden et al (1999) and Armour et al (2001) review the literature on the effects of financial incentives on physician behavior and come to similar conclusions.

HMOs have 30% to 40% lower expenditures. Virtually all the difference comes from lower unit prices rather than differences in actual treatments. However they consider only heart attack patients, for whom price reductions are likely to be due to lower negotiated prices within a hospital rather than to referring patients to cheaper hospitals, so they do not investigate the latter mechanism. Escarce et al (2001) study an HMO in Michigan offering both an HMO and POS product and find that the HMO, which requires referrals for specialty care, has lower physician and drug expenditures than the POS plan which does not. Gaynor, Rebitzer and Taylor (2004) look in more detail at how HMOs achieve cost savings. They analyze physician responses to group-based financial incentive contracts within a single HMO. They find that spending on medical utilization increases with the size of the physician group receiving group-based incentives. That is, spending is negatively correlated with the intensity of incentives to limit these expenditures. The correlation is greater for outpatient expenditures than for inpatient expenditures.

The second relevant literature considers whether individual physicians respond to financial incentives by altering behavior on a patient-by-patient basis. For example, Melichar (2009), Franzini et al (2010) and Meyers et al (2006) all find evidence that individual physicians are willing to provide differential care in response to patients' insurance status.⁶ None of these papers consider the mechanism of interest to us: physicians controlling costs by altering their hospital referral choices.

The third, much larger literature estimates discrete choice models of hospital demand: see Gaynor and Vogt (2000) for a survey.⁷ Almost all of these papers exclude the price paid by the insurer to the hospital from the utility equation. One exception is Gaynor and Vogt (2003) which uses assumptions to define a price index for each hospital that is included in the utility equation. However, that paper assumes away interactions between patient characteristics and the attributes of a particular hospital in determining procedures and therefore prices. It also does not consider the impact of physician incentives on the price coefficient.

Our inequalities analysis is similar in spirit to previous papers that match treatment to control groups based on observable data and assume that unobserved information does not affect response to treatment. The propensity score literature, and difference-in-differences analyses more generally, fall into this category. [Add references.] Our moment inequalities methodology is based on that developed in Pakes, Porter, Ho and Ishii (2011). A few other papers use methods based on inequalities to difference out important control variables; Spiller (2011) is particularly similar to our methodology.

Finally, our analysis of the variation in hospital discounts across different types of insurers and hospitals is related to a large previous literature analyzing the impact of buyer and seller concentration in health care markets. Dranove and Satterthwaite (2000) and Gaynor and Vogt (2000)

⁶The applications are Medicare versus private insurance for Franzini et al (2010), capitation versus non-capitation coverage for Melichar (2009) and privately insured versus publicly insured and uninsured patients in Meyers et al (2006).

⁷Examples include Luft et al (1990), Burns and Wholey (1992), Town and Vistnes (2001), Capps, Dranove and Satterthwaite (2003), Tay (2003) and Ho (2006), all of which either omit price entirely or include only the list price (and estimate a positive or unrealistically small negative price coefficient).

provide good reviews of this literature. Several papers quantify the impact of insurer concentration on negotiated prices, often considering Blue Cross/Blue Shield in particular.⁸ Almost all find a positive relationship between insurer market share and hospital discounts. A second set of papers considers the impact of hospital market share on prices, usually by regressing hospital price on a measure of hospital concentration.⁹ Most of these studies find that increased hospital concentration is correlated with increased prices (reduced discounts). In addition, a few papers model the bargaining process between hospitals and insurers more directly; these consistently find a positive relationship between prices and variables related to hospital bargaining power (such as hospital concentration and consumer willingness-to-pay measures) and a negative relationship between prices and insurer concentration.¹⁰

We conduct a preliminary analysis of the response of physician referrals to capitation payments in Ho and Pakes (2011). In that paper we regress a severity-adjusted price measure on the proportion of the insurer’s payments to primary physicians that are capitated and market fixed effects and estimate a negative and statistically significant coefficient on the capitation variable.¹¹ This is consistent with the hypothesis that insurer capitation payments influence physician referrals. However, simple regressions like these cannot provide more than suggestive evidence since they do not account for the trade-offs made between price and other hospital characteristics in the hospital choice equation.

3 Background on the Market

The analysis in this paper focuses on enrollees of health maintenance organizations (HMOs). We exclude other types of insurer because the insurer name, a key input into our analysis, is only identified in the data for HMO enrollees. As of December 2002, 21.4 million consumers in California (63% of the population) were enrolled in an insured HMO plan.¹² The seven largest HMOs had 87% of the California HMO market at the end of 2002. Our analysis focuses on six of these seven: we exclude Kaiser (the largest HMO with 30.5% of the market in 2002) because the prices paid by this vertically integrated insurer to its hospitals are not observed in our data.¹³

⁸Examples include Feldman and Greenberg (1981), Adamache and Sloan (1983), Foreman et al (1996), Staten et al (1987 and 1988) and Melnick et al (1992).

⁹See for example Melnick et al (1992), Dranove et al (1993), Connor et al (1998), Simpson and Shin (1998), Keeler et al (1999) and Lynk and Neumann (1999). Burgess et al (2005) use panel data to consider a similar question. They investigate the response of hospital prices to changes in hospital system membership over time in California and find a positive system effect on hospital pricing.

¹⁰Examples include Brooks et al (1997), Town and Vistnes (2001), Capps et al (2003) and Ho (2009).

¹¹We adjust for severity by constructing the following price ratio measure: $p_i^{ratio} = \frac{p_i}{\bar{p}_{s_i}}$ where p_i is the hospital price for patient i and \bar{p}_{s_i} is the average of that variable for same-severity patients across all hospitals in the sample.

¹²The 2003 California medical care market is described in detail in Baumgarten (2004). Several previous papers describe the contractual arrangements between health plans and physicians in California, including Rosenthal et al (2001 and 2002) and Grumbach et al (1998a. and b.).

¹³The remaining large HMOs, which are included in our analysis, are Blue Cross, Blue Shield, Health Net, Pacificare, Aetna and CIGNA. Blue Cross of California is independent of other Blue plans, including Blue Shield of California, except that it is a member of the Blue Cross Blue Shield Association. It is part of the Anthem/Wellpoint organization. PacifiCare was purchased by United HealthCare in 2006.

Each HMO contracts with a network of providers (physicians and hospitals); enrollees are required to seek care only within that network. Each pregnant woman chooses an obstetrician from within the network and is referred to one of the small number of network hospitals with which the obstetrician is affiliated. The patient's choice of obstetrician is informed by the list of affiliated hospitals, which is public information. While HMOs could, in theory, influence hospital referrals for their enrollees by defining narrow hospital networks, in practice this is not usually the case.¹⁴ Similarly, HMOs do not generally use hospital payment mechanisms that provide incentives either to control costs or improve quality. Most hospitals in California are paid by the insurance carrier on a per service or per diem basis.¹⁵

Payment arrangements for physicians, in contrast, are often structured to generate cost-control incentives. Most HMOs contract on a non-exclusive basis with large physician groups,¹⁶ making capitated (fixed) monthly payments to the group for every enrollee who uses it as his or her primary care clinic. The alternative is a fee-for-service payment arrangement. The extent of financial risk passed to the medical group varies across capitated contracts. In around 20% of cases the monthly ("global capitation") payment covers all services needed by the physician group's patients including inpatient hospital stays. Physician groups have a clear incentive to refer their patients to lower-cost hospitals. The remaining 80% of capitation contracts involve payments that cover only the cost of services provided by physicians within the group, perhaps with the addition of ancillary services like outpatient medical tests. The HMO makes separate payments to hospitals for providing secondary care. Physician groups again have incentives to control hospital costs because "shared risk arrangements" almost always apply, under which a spending or utilization target is set and cost savings or overruns relative to the target are shared between the physician group and the HMO.¹⁷ Fee-for-service contracts do not generally involve shared hospital risk arrangements. Our dataset does not distinguish between global and non-global capitation arrangements. We assume that physician groups facing capitation contracts of any kind have an incentive to be affiliated with and refer patients to lower-cost hospitals, while that incentive does not exist if the physician group receives fee-for-service payments.

¹⁴Ho (2006) finds that on average over 80% of hospitals were included in each HMO's network in a sample of 43 large markets (including seven in California) in 2003. Capps, Dranove and Satterthwaite (2003) report similar evidence. Our analysis conditions on the provider network of each HMO in our data.

¹⁵Capitation payment arrangements under which the hospital bore financial risk for the services provided, which at one point were common in California, had almost died out by 2003 (apparently due largely to the increase in hospital economic power generated by hospital system formation).

¹⁶There are two types of physician groups: medical groups and Independent Practice Associations (IPAs). On average they each cover 50,000 lives and contain between 200-300 physicians per group. Approximately two-thirds of patients covered by non-Kaiser physician organizations are in IPAs and one-third are in medical groups (see Rosenthal et al (2001) for data). Physicians in medical groups are either employees or partners of the group. IPAs are administrative organizations that contract with independent physicians or clinics and sign network contracts with health plans on behalf of their physicians. They exist primarily to negotiate and manage capitation contracts for their member physicians. Physicians and physician practices that are members of IPAs often also provide services to the same HMOs on a fee-for-service basis outside of the IPA, although these arrangements represent a minority of patients.

¹⁷Rosenthal et al (2001) note that 85-90% of non-global capitation revenues were generated from contracts with shared hospital risk. Robinson and Casalino (2001) report similar findings.

If capitation arrangements are to influence hospital referral choices, however, cost-control incentives must be passed from the physician group to the individual physician.¹⁸ The connection is clear when the physician is a partner in a medical group since his or her own income is directly linked to the group's profitability but less clear for other physicians. Rosenthal et al (2002) consider this issue, tracking the flow of financial incentives from physician organizations to physicians in California. They find that the majority of physician groups receiving capitation payments pass financial risk on to individual physicians, in the form of either capitation-based compensation, cost-of-care bonuses or profit sharing.¹⁹

Our dataset does not identify the physician or physician group referring each patient to hospital. However, we do observe the name of each patient's HMO and the percent of each insurer's primary services and other medical professional services that are capitated. In the analysis below we compare the importance of price in determining the hospital choice for patients enrolled in high-capitation insurers to its importance for those in low-capitation insurers. While a correlation between HMO capitation rates and price sensitivity could be caused by selection of physicians who are affiliated with low-priced hospitals into capitation contracts, the alternative causal relationship seems just as likely. As noted above, the previous literature on physician treatment choices indicates that they are willing to treat patients differently depending on their insurance status. Melichar (2009) is the most relevant for our study: the author uses physician survey data and physician fixed-effect regressions to demonstrate that physicians spend less time with their capitated patients than with their non-capitated patients.²⁰

There are at least two possible causal mechanisms. First, consistent with Melichar (2009), each physician may differentially refer her capitated patients to cheaper hospitals and her non-capitated patients to others. Second physicians with a majority of revenues from capitated contracts may choose to be affiliated with a relatively low-priced hospital while those with a minority of capitated contracts do not. Unfortunately our limited data prevents us from distinguishing between these mechanisms.

We note that the incentives generated by the California medical care system are similar to those introduced by the 2010 health care reforms in several ways. Capitation payments are similar in some respects to the payment bundling to be piloted in the Medicaid program. Both are intended to reduce the incentives, generated by fee-for-service payment systems, to provide more services than necessary and both reward physicians for referring patients to lower-priced hospitals. The difference is that bundled payments address these incentives within an episode of care while capitation payments address them both within and across episodes. The Accountable Care Organizations

¹⁸Individual physicians also need to be informed about relative hospital prices. Evidence from interviews with California insurers and physicians indicates that this information is often provided by the physician group practice manager.

¹⁹Grumbach et al (1998a) survey California IPAs and have similar findings. They also note that IPAs that are paid on a fee-for-service basis make fee-for-service payments to their member physicians.

²⁰The evidence in Cutler et al (2000), that heart attack outcomes for HMO enrollees do not differ from those of enrollees in other insurance types, suggests that there are limits to this willingness to differentiate care based on financial incentives.

(ACOs) set up by the reforms are particularly similar to the California system. While the details of the arrangements have not yet been determined, ACOs are likely to constitute large groups of physicians that negotiate shared risk arrangements (or "gain-sharing" contracts) with payors and that send patients to one or a small number of hospitals in the market.²¹ There are obvious similarities to the California institutional arrangements just described. We therefore expect our analysis to be informative regarding the impact of the reforms on hospital inpatient costs; that is our evidence reinforces the belief that if care-givers are given incentives to minimize costs they direct patients to lower-priced hospitals.

4 The Dataset

We use four datasets. The first is hospital discharge data covering all patient discharges from hospitals in California in the year 2003 from the state's Office of Statewide Planning and Development (OSHPD). This provides information on each patient's zip code, demographic characteristics, health insurer, the hospital chosen and patient diagnosis details: both the "principal" diagnosis recorded as the major cause of admission and a list of up to 24 other diagnoses for each patient.²² We link this to OSHPD hospital financial data and to hospital characteristics data from the American Hospital Association for 2003. Finally we have access to the State of California Department of Managed Health Care Annual Financial Reporting Forms for 2003. These include balance sheets, income statements and some information on enrollment, utilization and types of payment to providers for all HMOs in California. We consider only admissions records for women in labor and only private HMO enrollees. Our analysis covers only the six largest insurers other than Kaiser Permanente: these make up over 96% of the non-Kaiser observations in the data. We infer the hospital network of each HMO using the discharge data by assuming that a hospital is in the network if at least 3 patients are admitted from the particular insurer.²³ Consistent with Kessler and McClellan (2000), we assume that patients consider traveling up to 35 miles to visit a general hospital and up to 100 miles to visit a teaching hospital.

We do not observe the price charged to the insurer by the hospital. Instead our data includes the list price for every discharge. There is evidence that the list price contains meaningful information on prices. As noted in Melnick (2004), list prices are essentially equivalent to the "rack rate" that hotels list for their rooms. They are a standard set of prices listed by hospitals in each year for all their services. All patients are quoted the same list price for the same service. However, only uninsured patients and some patients using an out-of-network provider are actually asked to pay the list price, and even they are frequently offered a discount by the hospital. Each insurance

²¹Hospitals are also likely to be members of ACOs. To avoid antitrust investigation, however, large hospitals will probably be required to form non-exclusive relationships, i.e. to be affiliated with several ACOs in the market.

²²We have a Private Use version of the data in which patient zip code, age, race and gender are not masked.

²³We check the implied network definitions against hand-collected data (described in detail in Ho (2006)) from seven California markets in 2003. The definition is conservative: that is, the networks implied by our methodology contain fewer hospitals than the networks in the hand-collected data and if an implied network contains a particular hospital it is also included in the hand-collected data in the vast majority of cases.

company has a contract with each provider in its network that defines a discount from the list price for its enrollees. We observe the average negotiated discount at the hospital level, calculated as the total contractual adjustments from private managed care payors divided by the total charges (the sum of list prices for all inpatient and outpatient episodes) for the relevant hospital-year.²⁴

Our baseline price measure is calculated in two steps. First we find the expected list price for each patient-hospital pair, calculated as the average observed list price for a group of ex ante similar patients at the particular hospital, where our definitions of similar patients differ across our model specifications and are detailed below. We then multiply this ex ante measure of list price by 1 minus the average discount at the hospital level.²⁵

We demonstrate below that there is meaningful variation in this price measure both across patients of different sickness levels and across hospitals. However, it is clearly subject to measurement problems. Potential problems with expectational error due to the fact that hospital admissions are made on the basis of ex ante expectations regarding prices, but we observe in the data their ex post realizations, are addressed by using the expected rather than observed list price. However there is a trade-off between aggregation error, if our groups of similar patients for the expected list price calculation are defined too broadly, and measurement error if they are too narrow implying small sample problems. We return to this issue below. Finally there may also be specification error since we observe the discount at the hospital rather than the hospital-insurer level and since the observed value is an average for both inpatient and outpatient services and for all managed care payors (HMOs and Point of Service plans) rather than just for HMO inpatient events. If variation in discounts across insurers and plan types is known to physicians this specification error will generate selection bias in our estimates. We address this in Section 7 by using additional discharge data covering all diagnoses, including information on the share of each hospital's inpatient HMO revenues coming from each insurer, to estimate an equation describing the discount as a function of hospital, insurer and market characteristics. This analysis also separates HMO inpatient discounts from other discounts. We repeat our inequalities analysis using two price measures derived from this analysis. However we begin by ignoring specification error and using the baseline price variable since this is less dependent on modeling assumptions.

Different insurers may use different payment mechanisms to reimburse different hospitals in their networks. The major possibilities are fee-for-service payments and per-diem payments under which the hospital receives a fixed number of dollars per day of inpatient stay. We have some information at the hospital and insurer level on the payment mechanisms used but this information is not provided at the discharge level.²⁶ The weighted average percent of payments that are made

²⁴Both variables are recorded in the hospital's financial statements. Contractual adjustments are defined as "the difference between billings at full-established rates and amounts received or receivable from third-party payors under formal contract agreements".

²⁵Gaynor and Vogt (2003) use a similar methodology, defining price as the observed list price multiplied by 1 minus the average discount.

²⁶Case-based or D.R.G. payments are also possible: our data do not distinguish between them and fee-for-service payments but we expect case-based payments to be less common since they are predominately used by Medicare rather than private payors. Capitation payments to hospitals are possible but uncommon: 72% of hospitals report zero capitation payments in our data. Our logit analysis includes all hospitals, including those that receive capitation

on a per-diem basis (where the weight is the number of enrollees in the plan) is fairly low at 21%. Two of the six carriers in our data, Aetna and Health Net, report no per-diem payments in 2003. Still, there is clearly some variation in the data in terms of payment mechanisms which will generate measurement error in the price variable.

Table 1 sets out summary data on the six insurers included in the analysis; data for Kaiser is also included for comparison. These data give a broader picture of the insurers we consider than can be provided by our specific dataset. Since the effect of capitation payments on the price coefficient will be identified from variation across these six insurers, our goal here is to summarize the differences between them on other relevant dimensions. The first three columns provide enrollment data, showing that of the insurers we consider, Blue Cross, Blue Shield and Health Net have the largest commercial plan enrollment while Aetna and Cigna have the smallest. Every insurer in our dataset has over 70% of its enrollment in commercial plans. Column 4 lists the number of labor discharges included in our analysis for each plan; the breakdown is approximately proportionate to the commercial enrollment numbers. Column 5 lists the percent of each HMO's primary services that are capitated.²⁷ There is considerable dispersion across insurers, from Pacificare with 97% capitated payments to Blue Cross with 38%. The rest of the table demonstrates that insurers with a high percent of capitated payments are not obviously different from other insurers on dimensions such as premiums per member per month, inpatient utilization and prescription drug costs. Blue Shield and Blue Cross, which have the lowest proportion of capitated payments, were historically different from other insurers. They were 501(c)(4) tax exempt as social welfare plans, acting as administrators of Medicare and providing coverage to state and federal government employees. Today, however, Blue Cross and Blue Shield companies are franchisees, independent of the association and each other. They are no longer tax exempt and may be for-profit corporations: in California Blue Cross is an investor-owned for-profit organization while Blue Shield is a not-for-profit company. Blue Cross has a lower medical loss ratio (defined as medical and hospital expenses divided by premium revenues for the whole insurer) and similar inpatient utilization to other insurers in the market. Blue Shield has relatively high inpatient utilization figures but its premiums and medical loss ratio are quite low and its profit margin is the third highest of those listed.

Table 2 provides summary statistics on the discharges in the dataset. There are 88,157 patients and 195 hospitals.²⁸ There are 38 hospitals in the average patient's choice set. 27% of discharges are

payments. In a robustness test we redefine price to be $\text{price}^*(1 - \text{percent of revenues received on a capitated basis})$. The results are available from the authors on request; they are very similar to those from the baseline logit analysis. The inequalities analysis excludes a few hospitals reporting that more than 5% of their revenues are paid on a capitation basis; excluding all hospitals with non-zero capitation payments has very little effect on our results.

²⁷Capitation payments for primary professional services are defined in the HMO Annual Financial Statements as "capitation costs incurred by the reporting entity to primary care physicians, dentists and other professionals for the delivery of medical services". They include capitation payments to obstetricians. The statements also record capitation payments to other medical professional services, including support personnel such as nurses, ambulance drivers and technicians.

²⁸This is the sample used for the logit analysis, for which theory requires us to include every hospital in every patient's choice set. The inequalities analysis has the advantage that we do not need to account for the patient's full choice set; pairwise comparisons between hospitals are sufficient for consistent estimation. We therefore exclude some hospitals with missing average discount data, whose values we fill in using regression analysis for the logits, and the

from teaching hospitals. The average price paid (approximated as list price*(1-average discount)) is \$4,317 for labor admissions.²⁹ The average length of stay is 2.5 days. The importance of the distance between the patient's home and her hospital is clear from the raw data. The average distance between a patient and a hospital in her choice set is 24.6 miles; the average distance to the chosen hospital is 6.7 miles. Distance will be an important variable in the utility equation estimated below.

The table also records means for three potential measures of outcomes: death while in hospital, transfer to an acute care setting (at this hospital or a different hospital) and transfer to a special nursing facility (again at either this or a different hospital). These are useful inputs to an initial investigation of the patterns in the data although we will not use them in our full model. The average probability of each event is low for labor admissions: 0.01% for death, 0.3% for acute care transfer and 1.5% for transfer to a special nursing facility. Table 3 demonstrates that the variation in price and in outcomes across patient ages and comorbidities is intuitive. Women giving birth who are aged over 40 have a significantly higher average price, significantly higher probability of acute care transfer and also a slightly higher probability of transfer to a special nursing facility although the latter is not significant.

We use the Charlson score (Charlson et al, 1987) as a measure of patient severity: this assigns integer-valued weights (from 0 to 6) to comorbidities other than principal diagnosis where higher weights indicate higher severity. The weights are summed to generate a single integer-valued index. For example, patients with comorbidities indicating that they have diabetes or mild liver disease would receive a Charlson score of 1; those with renal disease or any malignancy would have a Charlson score of 2; those with a metastatic solid tumor or AIDS would have a Charlson score of 6. A patient with both diabetes and renal disease would have a score of 3. The index was developed by physicians and is widely used to measure severity based on diagnoses listed in patient records. Table 3 indicates that women with higher Charlson scores in our data had higher prices and higher probabilities of adverse outcomes than women with lower Charlson scores. All of these differences are significant at $p=0.05$. Our analysis will allow the Charlson score, interacted with other severity measures such as age and principal diagnosis, to affect preferences directly.

small number of hospitals reporting that more than 5% capitated revenues. We are left with 70,799 patients and 157 hospitals.

²⁹If discount information is missing we fill it in for the logit analysis using regression analysis. (These observations are excluded from the inequalities analysis.) For 7.5% of the hospitals in the sample we do not observe the discount for the calendar year but do observe discount data for both relevant fiscal years (from the annual financial statements; fiscal years vary across hospitals). We fill in the missing calendar year information using the predictions from a regression of calendar year discounts on fiscal year discounts and hospital characteristics (fixed effects for hospital systems, service type, control type, Hospital Referral Region, teaching hospitals and particular services provided and lagged numbers of doctors and beds, all as reported in the American Hospital Association data for 2003). The R^2 of the regression is 0.61. A further 12.1% of hospitals have missing discount data for the relevant fiscal years and the calendar year; in this case we use the predictions of a regression of calendar year discounts on hospital characteristics which has a R^2 of 0.49.

5 The Model

The choice of hospital is made by the doctor in consultation with the patient. The patient's preferences are affected by the distance from her home to the hospital, her assessment of the severity of her condition, and by the hospital's (observed and unobserved) characteristics. The patient neither pays nor observes the price. The physician's choice is influenced by the patient's preferences, their assessment of the severity of the patient's condition and the quality of the hospital services for that severity, and the price charged by the hospital to the insurer. We assume that the utility function whose maximum determines the hospital (h) that patient i of insurer π is allocated to, takes the additively separable form

$$W_{i,\pi,h} = \theta_{p,\pi}(\delta_{\pi,h}lp(c_i, h)) + g_\pi(q_h(s), s_i) + \theta_{d1,\pi}d(l_i, l_h) + \theta_{d2,\pi}d(l_i, l_h)^2 + \varepsilon_{i,\pi,h} \quad (1)$$

where

- $lp(c_i, h)$ is the expected list price for a patient with characteristics c_i at hospital h and $\delta_{\pi,h}$ is 1 minus the discount negotiated at the hospital-insurer level so that $\delta_{\pi,h}lp(c_i, h)$ is the insurer's expected payment for the hospital's services
- s_i is a measure of the severity of the patient's illness and $q_h(s)$ is a vector of perceived qualities of hospital h for different patient sickness levels s so that $g_\pi(q_h(s), s_i)$ is an interaction term which differs with the quality of the hospital's services for different sickness levels,
- l_i is patient i 's location and l_h is hospital h 's location while $d(\cdot)$ provides the distance between the two, and
- ε is a disturbance terms not observed by the econometrician which is assumed mean independent of the included right hand side variables.

There is no outside option: we assume that the women in the discharge data only consider giving birth at a hospital.

In much of the analysis that follows we approximate $\delta_{\pi,h}$ with its average at the hospital level δ_h . In Section 7.3 we address the specification error generated by this assumption; until then we ignore it. The discount times the observed price determines the first term in the utility function and it derives solely from the physician's preferences; the other terms may be affected by both patient and physician's preferences. Notice that the function $g_\pi(\cdot)$ is allowed to differ arbitrarily among sickness levels for a given hospital and across hospitals. It therefore allows particular hospitals to have higher quality for some sickness levels than for others, and permits physician to differ in their intensity of preferences for quality when considering patients of different sickness levels. For some specifications we will have to constrain $g_\pi(\cdot)$ to be a parametric function of patient and hospital characteristics. To the extent that the parametric assumption does not capture all the variance in $g_\pi(\cdot)$ the residual variance will create an additional unobservable that may bias the other parameters

of interest. In particular if the “unobserved quality” represented by this residual is correlated with price we would expect it to cause a positive bias in the price coefficient. Finally note that when we allow $g_\pi(\cdot)$ to differ by insurer (by π), we allow different insurers to assess both different hospitals and the tradeoffs between hospitals and costs, differently, and we allow consumers to respond to these differences and select across insurers accordingly.

6 Logit Analysis

We begin with a multinomial logit model of hospital choice, as it provides a familiar way of investigating the patterns in the data. The logit model makes the following assumptions.

$$\delta_{\pi,h}lp(c_i, h) = \delta_h^o lp^o(c_i, h) \quad (2)$$

$$\theta_{d1,\pi} = \theta_{d1}; \quad \theta_{d2,\pi} = \theta_{d2} \quad (3)$$

$$g_\pi(q_h(s), s_i) = q_h + \beta z_h x(s_i) \quad (4)$$

We make three different assumptions regarding the price coefficient $\theta_{p,\pi}$:

$$(a) \quad \theta_{p,\pi} = \theta_p; \quad (5)$$

$$(b) \quad \theta_{p,\pi} = \theta_{p,\pi};$$

$$(c) \quad \theta_{p,\pi} = \theta_0 + \theta_1 \cdot pcap_\pi$$

Finally we assume that $\varepsilon_{i,\pi,h}$ is known to our composite agent at the time decision is made, and has a distribution, conditional on the other right hand side variables, which is i.i.d. Type 1 extreme value. We estimate the model using maximum likelihood.

Equations (2) - (3) state that the price is equal to the expected list price (which is our “observed price”) multiplied by one minus the observed average discount and that the distance coefficients are assumed to be fixed across insurers. Equation (4) restricts the $g_\pi(\cdot)$ term in a way consistent with the previous literature: we assume it is determined by a hospital fixed effect plus interactions between hospital characteristics and patient characteristics that are known on admission and expected to be correlated with severity. In the inequalities analysis below we define over 100 patient severity groups and allow these to freely interact with hospital fixed effects. We can not do this in the logit analysis because it would imply estimating almost 20,000 coefficients and a similar number of expected price terms (without error). So we assume the interaction terms are determined by linear interactions between hospital and consumer diagnostic characteristics. Included in z_h are the number of nurses per bed and indicators for teaching hospitals, for-profit hospitals and hospitals that offer transplant services (a proxy for high-tech hospitals). We also include a measure of the quality of labor and birth services: hospitals were rated on a scale from 0 to 1, where 0 indicated that no labor/birth services were provided and a higher rating indicated that a less common (assumed to be higher-tech) service was offered. The patient characteristics in x_i are the expected probabilities of death in

hospital and of transfer to acute care setting or special nursing facility given the patient's age group, principal diagnosis and Charlson score. While these interactions, like those used in the previous literature, are sensible given the constraints imposed by the methodology, we do not expect them to be sufficient to fully address the price endogeneity issues noted above, and to the extent they do not, we expect an upward bias estimated price coefficient.

Of course there may be other biases in the price coefficient which emanate from errors in our expected price variable. We define the expected list price to be the average list price for the particular hospital over patients with the same age (categories 11-19, 20-39, 40-49 and 50-64), principal diagnosis (21 categories for women in labor including, for example, "normal delivery", "previous Cesarean Section" and "early labor"), Charlson score and diagnosis generating the Charlson score. Both principal diagnosis and Charlson score are based only on diagnoses known on admission³⁰. We are constrained to using these fairly broad definitions of similar patients because we encounter small sample problems when we define narrower groups³¹. To the extent that the aggregation generates measurement error in our price measure we expect it to attenuate the the estimated price coefficient.

The equations in (5) note that we begin by assuming a common price coefficient across all insurers. We then allow this to differ across insurers and investigate whether there is a significant relationship between the percent of the insurer's payments to primary physicians that are capitated and the price coefficient. After presenting these results, we provide another set of results which control for variation in patient severity by restricting our attention to the least sick patients in the data. These are defined as women in labor who are aged 20-39, have a Charlson score of 0, and whose principal diagnosis and comorbidities are defined by obstetrical experts to be "routine". Our sample contains 43,742 of these patients. We then repeat the estimation using only the sickest patients in the data, defined as all women in labor other than those "least sick". This, however, is a group with a more diverse set of severity conditions, so we expect the simultaneity bias to be more evident in this subsample. The inequalities analysis below addresses both the price endogeneity and the measurement error issues more directly.

6.1 Logit Results

A summary of the results is reported in Table 4. The price coefficients, price interaction terms and distance coefficients are reported, together with the sample size, for each specification. In each case the distance coefficient is negative and highly significant, with a magnitude that is consistent with

³⁰For example two same-age, same-principal diagnosis women in labor, one with diabetes and the other with mild liver disease, would both have a Charlson score of 1 but would not be in the same group used to determine prices. However, if both had a Charlson score of zero implying no serious comorbidities, but one had a migraine and the other had a viral infection they would be assumed to have the same price.

³¹If the set of patients to be used to determine a patient's price in a particular hospital is empty, we expand the group of "similar" patients to include women in the same age category and with the same Charlson score and principal diagnosis. If this is also empty we expand it to include all same-age category same-principal diagnosis patients, then all same-principal diagnosis women. If this group is also empty we take the mean of the non-missing prices already calculated for the particular patient.

estimates from the previous literature.³² The price coefficient is positive and significant with a t value of approximately 5. Not unexpectedly the price coefficient seems to be biased upwards in the specification using the full sample of labor/birth discharges. I.e. high price hospitals are likely to be high quality hospitals, there is a preference for high quality hospitals, and part of the relevant quality differences are not picked up by the observables we have been able to put into our equation.

When we restrict the sample to the least-sick women the coefficient becomes negative (magnitude -0.017) and marginally significant (standard error 0.009). Including interactions between price and insurer fixed effects yields interesting results. Insurers in the table are sorted by declining proportion of capitated payments to primary physicians. Blue Cross and Blue Shield, which have the lowest proportions of capitated payments, have small, positive and insignificant price coefficients. All four of the remaining HMOs have price coefficients less than 0 even though we have not fully controlled for severity-hospital interactions. The negative price coefficients are significant for Pacificare and Health Net, two of the three carriers that favor capitation the most (97% of payments for Pacificare and 80% for Health Net). The remaining carriers, Aetna and Cigna, have relatively small sample sizes (6291 and 8097 labor discharges respectively, compared to 15,479 for Pacificare and 16,950 for Health Net), which helps explain the larger standard errors on their price coefficients. When we remove the price-insurer interactions and instead include an interaction between price and the percent capitation in the insurer, the price coefficient is positive and the interaction term negative with almost twice the magnitude of the price coefficient. Both are significant at $p=0.05$.

We interpret the magnitudes of the coefficients by considering the average effects of changes in hospital characteristics on demand. Consider first the distance coefficient. We calculate the impact of a one mile increase in distance for hospital h , holding all else fixed, on the probability that a particular patient i visits that hospital. We then take the average over patients and a weighted average over hospitals. The average effect of the one mile distance increase is a 13.7% reduction in the probability that the hospital is chosen.³³ We conduct a similar exercise to evaluate the magnitude of the price effect. Consider Pacificare, the insurer with the most negative estimated price coefficient. The average effect of a \$1000 increase in a hospital's price, holding all other prices constant, is a 5.2% reduction in the probability that the hospital is chosen.³⁴ Finally we evaluate the trade-offs made between price and distance. We find the average of $\eta_i = \frac{\partial d_i}{\partial p_i} \frac{p_i}{d_i}$, or the distance reduction required to compensate for an incremental price increase at fixed utility. The cross-patient average of η_i for Pacificare is 0.33. Keep in mind that we still expect both simultaneity and attenuation bias in these numbers.

The results for the sickest population are, as expected, quite different. The price coefficient is now positive and significant, consistent with the hypothesis that unobserved within-hospital variation in quality (probably at the hospital-severity level) is positively correlated with price and affects

³²See, for example, Gaynor and Vogt (2003) and Ho (2006).

³³The average distance to the chosen hospital for the less-sick patients included in the sample is 6.45 miles; the standard deviation is 10.11 miles. The weighted average probability that a particular hospital is chosen is 2.7%, where the weight is the number of discharges.

³⁴The average price for the less-sick patients in the sample is \$3380; the standard deviation is \$1870.

choices more for sicker than for less-sick patients. When we add price-insurer interaction terms the interaction is again negative for Pacificare; although insignificant at $p=0.05$ and smaller in magnitude than for the healthier population. All other insurers' price coefficients are positive and three out of five are statistically significant. The third specification, including a price-percent capitation interaction, is consistent with prior results. Again we estimate a positive price coefficient and a negative interaction term (implying that insurers that favor capitated payments generate physician referrals that are more price-based than those of other physicians). However, the magnitudes are much more similar than for the healthier population and the implied overall price coefficient is positive even for insurers with 100% capitated payments to primary physicians.

The difference in results for the sick compared to the less-sick populations is suggestive of a more substantial endogeneity issue for the sicker population³⁵. We conducted several robustness tests. First we investigated the importance of capitation payments to hospitals (rather than physicians) by interacting our price measure with 1 - the percent of hospital payments that are capitated. This had very little effect on the overall results. Second we added interactions between price and hospital characteristics such as indicators for teaching hospitals, hospitals providing transplant services and for profit hospitals and with the number of nurses per bed at the hospital. The estimated coefficients were almost always insignificantly different from zero. Finally we considered whether the hospital fixed effects estimated in the logit analyses were consistent with our interpretation of the results. These are jointly significantly different from zero in every specification and we looked to see whether those estimated for the less sick patients were related to those estimated for the sick patients using the specification that includes price and price interacted with the percent capitation in the insurer. The correlation between the coefficients from the analysis of less-sick and sicker patients is 0.71: that is, hospitals that are attractive to physicians referring less-sick women for their labor episodes tend also to be attractive options for sicker women. This despite the fact that when we regress either set of the fixed effects onto hospital characteristics we get very low R^2 's (.02 to .05), and even when market effects are added the R^2 only rises to .20³⁶.

7 Inequalities-Based Methodology

7.1 Definitions of Severity and Price

The results of the logit analysis indicate that the price paid by the insurer does matter in determining patient referrals to hospital, at least for the least sick patients. However, the logit methodology does not fully control for variation in quality, or in preferences for quality, at the hospital-severity level; a fact which might explain the positive price coefficient for relatively sick patients. In ad-

³⁵Of course it could also be that choices are made for sicker patients with a smaller price elasticity of demand but this is unlikely since the insurer pays the price (not the patient) and the results are similar when we estimate separate price coefficients for each insurer. Moreover when we more fully addressed endogeneity issues using the inequalities analysis described below and then split the sample between sicker and less sick patients we found little difference between the two sets of estimates.

³⁶The characteristics included: whether it is a teaching hospital, nurses per bed, whether it is for profit, whether it offers transplants, and a measure of the quality of labor services.

dition we are compelled to use average prices within quite broadly-defined patient groups because narrower groups would mean that we obtain our expected price by averaging a smaller numbers of realized prices, and this would generate a measurement error with larger variance in our expected price measure. We now develop an estimation method based on inequalities that addresses these issues.³⁷

To do so we create an inequality for each patient and for each feasible alternative hospital that was not chosen. We then sum the inequalities of two same-insurer, same-severity patients whose chosen and alternative hospitals are switched. The severity-hospital interaction terms will be differenced out and it will be relatively straightforward to place bounds on the remaining terms. Since we have removed the interaction terms we no longer need to estimate their coefficients and can define them at a much more detailed level than was possible in the logit analysis. Moreover, the averaging should eliminate the effects of classical measurement error.

This methodology relies on the assumption that the price measure varies within a hospital across patients who have the same insurer and the same severity level; otherwise the price terms would be differenced out along with the interaction terms. Severities are assumed to be defined in sufficient detail that the severity-hospital interactions absorb all unobserved variation that affects choices and might be correlated with price. The additional variation across patients in different price groups conditional on severity is therefore assumed not to affect choices except through the price variable itself. We now provide details of our severity and price definitions and consider whether these requirements are satisfied. Our definitions follow the advice of obstetrical experts at Columbia Presbyterian Hospital. As one input to the definitions, these experts assessed the list of principal diagnoses and co-morbidities in our data, assigning each a rank from 1 to 3 where 1 indicated a routine diagnosis (such as normal birth or immunization of the newborn) and 3 indicated something more serious. See Appendix 1 for a complete list.

We use much narrower definitions of severity and price than were used in the logit analysis. Severity groups are now defined by the interaction between age, principal diagnosis, Charlson score, diagnosis generating the Charlson score and a sub-category defined by the rank of the most serious co-morbidity, other than principal diagnosis, that is listed in the discharge record. Prices are now averages for women with the same severity (as just defined) who also have the same number of most seriously-ranked co-morbidities. For example if two women have the same age and principal diagnosis and a zero Charlson score but one has a migraine (a rank 1 comorbidity) and one has a viral infection (rank 2), the women now have different severities and different prices. If neither women had a migraine but one had a viral infection and the other had a viral infection and also a thyroid disorder (both rank 2 comorbidities), they would be assumed to have the same severity but different prices. These definitions generate many more groups than those used in the logit analysis. For example, for the first insurer in our data, there are 9 populated severity groups and 63 groups defining prices using the logit-based categories; there are 106 severities and 272 price groups under

³⁷We address more structural problems with the price variable, problems related to the fact that different HMOs can obtain different discounts at the same hospital, in section 7.3 below

the more detailed definitions.

The obstetrical experts we interviewed advised us that these detailed price groups, conditional on severity, were unlikely to be important in terms of hospital choice. The price groupings are more detailed than those used for severity only in that they break out patients by the number of comorbidities of the highest rank as well as the identity of that rank. The number of similarly-ranked comorbidities is viewed as unimportant in determining referrals. While a physician might refer a pregnant woman with a comorbidity of rank 2 (such as hepatitis or a thyroid disorder) to a different hospital from a patient with only rank-1 comorbidities, this would be a hospital well-equipped to deal with high-risk pregnancies rather than the specific comorbidity, and the presence of two rather than one rank-2 comorbidities would not affect the referral decision. In contrast, our experts agreed that the number of comorbidities of a particular rank would be likely to affect the tests performed and drugs prescribed and therefore the price.

We test our assumptions by using an Analysis of Variance to consider whether price groups conditional on severity help explain variance in outcomes. We hypothesize that, if outcomes are not affected by this additional variation, it may be reasonable to assume that it also does not affect choices. The results indicate that, under our definitions, moving from severity to price groupings does not significantly increase the proportion of the variance in outcomes (the probability of death and of transfer to an acute care facility or a special nursing facility) that is absorbed in hospital-patient type groups. That is, we can hold outcomes fixed while allowing price to vary across groups of patients within a severity category. We also note that the Analysis of Variance indicates reasonable price variation across price groups conditional on severity. Moving from severity to price groupings explains an additional 12% of the variance in price (moving from 50% to 62% of the total variance). We take this to be sufficient evidence that our proposed definitions of severity and price groups are well-suited to our model. We now continue to the formal analysis.

7.2 The Inequalities Methodology

The choice model is still defined by the structural part of the utility function in equation (1), i.e. the part that is observed up to the parameter vector being estimated or,

$$W_{i,\pi,h} = \theta_{p,\pi}(\delta_{\pi,h}lp(c_i, h)) + g_{\pi}(q_h(s), s_i) + \theta_{d,\pi}d(l_i, l_h) \quad (6)$$

where for simplicity we have dropped the squared term in distance since it was very close to zero in all the logit results and dropping it did not affect those estimates. However now we explicitly distinguish between our constructs of price and the hospital-quality/severity interactions, and those determining the physician's choice. We treat the difference between our measures of these variables and the variables actually used by the physician as mean zero measurement error; and it becomes the disturbance in the choice equation.

More formally we have

$$W_{i,\pi,h}(x, h, \theta) = W_{i,\pi,h}^o(x^o, h, \theta) + \varepsilon_{i,\pi,h} \quad (7)$$

where $W^o(\cdot)$ is the model we obtain after substituting

$$\delta_h^o lp^o(c_i, h) = \delta_{\pi, h} lp(c_i, h) - \varepsilon_{i, \pi, h}^p \quad (8)$$

for $\delta_{\pi, h} lp(c_i, h)$ in equation (6), and, if “ a ” indexes the severity groupings of patients and “ c ” their groupings for price so that $s_i = s(a(c_i))$, substituting

$$g_\pi(q_h(s), s(a(c_i))) = g_\pi(q_h(s), s_i) - \varepsilon_{i, \pi, h}^g \quad (9)$$

for $g_\pi(q_h(s), s_i)$ in that equation, so that

$$\varepsilon_{i, \pi, h} \equiv \theta_{p, \pi} \varepsilon_{i, \pi, h}^p + \varepsilon_{i, \pi, h}^g,$$

and is assumed to be mean zero measurement error. In the models that use instruments (see below), we will need the stronger assumption that $\varepsilon_{i, \pi, h}$ is mean zero conditional on those instruments.

We allow the price coefficient to differ across insurers as $\theta_{p, \pi}$: this is assumption (b) in equations (5). Since, in contrast to the logit model which assumes an explicit distribution for $\varepsilon_{i, \pi, h}$, we will only be using averages, we have a free normalization. As a result we divide through by the absolute value of the distance coefficient (which is assumed to be negative), incorporating its magnitude into $\theta_{p, \pi}$ and $g_\pi(\cdot)$. So we will need the assumption

$$\theta_{d, \pi} = \theta_d \quad (10)$$

to interpret differences in the estimated coefficient as differences in price sensitivity (an assumption also imposed in the logit results provided above).

We conduct the analysis for each insurer separately. We begin by ordering the hospitals from the highest to the lowest average price. For every hospital h we consider every patient i_h who is admitted to h in our data and every other hospital h' in her choice set. Our model implies the following inequality:

$$\begin{aligned} \Delta W_{i_h, \pi, h, h'} &= W_{i_h, \pi, h}(x, h, \theta) - W_{i_h, \pi, h'}(x, h', \theta) \\ &= \theta_{p, \pi} (\delta_h^o lp^o(c_{i_h}, h) - \delta_h^o lp^o(c_{i_h}, h')) + g_\pi(q_h(s), s(a(c_{i_h}))) - g_\pi(q_{h'}(s), s(a(c_{i_h}))) \\ &\quad - (d(l_{i_h}, l_h) - d(l_{i_h}, l_{h'})) + (\varepsilon_{i_h, \pi, h} - \varepsilon_{i_h, \pi, h'}) \\ &\geq 0 \end{aligned} \quad (11)$$

For that (i_h, h, h') triple we find every patient $i_{h'}$ who is admitted to hospital h' , whose choice set includes h and who has the same severity a , the same insurer π and a different group defining price c . We sum the inequalities of the two patients to difference out the $g_\pi(\cdot)$ terms. Writing $\delta_h^o lp^o(c_{i_h}, h) - \delta_h^o lp^o(c_{i_h}, h') = p^o(i_h, h, h')$, $d(l_{i_h}, l_h) - d(l_{i_h}, l_{h'}) = d(i_h, h, h')$ and $\varepsilon_{i_h, \pi, h} - \varepsilon_{i_h, \pi, h'} =$

$\varepsilon(i_h, h, h')$:

$$\begin{aligned} & \Delta W_{i_h, \pi, h, h'} + \Delta W_{i_{h'}, \pi, h', h} \\ &= \theta_{p, \pi} [p^o(i_h, h, h') + p^o(i_{h'}, h', h)] - [d(i_h, h, h') + d(i_{h'}, h', h)] + [\varepsilon(i_h, h, h') + \varepsilon(i_{h'}, h', h)] \\ &\geq 0. \end{aligned} \tag{12}$$

Finally we take expectations on the data generating process to construct an inequality that relates the price coefficient to differences in prices and differences in distances:

$$E [\theta_{p, \pi} (p^o(i_h, h, h') + p^o(i_{h'}, h', h)) \mid I_{i, \pi}] \geq E [d(i_h, h, h') + d(i_{h'}, h', h) \mid I_{i, \pi}] \tag{13}$$

We weight by $\sqrt{N_{h, h'}}$ and by $\sqrt{N_h}$, where $N_{h, h'}$ is the number of pairs of patients who can switch between h and h' and N_h is the number of hospitals h' with which h has switches. Our first inequality for estimation is therefore:

$$\theta_{p, \pi} \sum_h \sqrt{N_h} \sum_{h'} \sqrt{N_{h, h'}} \sum_{i_h, i_{h'}} (p^o(i_h, h, h') + p^o(i_{h'}, h', h)) \geq \sum_h \sqrt{N_h} \sum_{h'} \sqrt{N_{h, h'}} \sum_{i_h, i_{h'}} (d(i_h, h, h') + d(i_{h'}, h', h)) \tag{14}$$

This generates a lower bound for $\theta_{p, \pi}$ if the price term is positive and an upper bound if the price term is negative.³⁸ We then add inequalities generated by interacting equation (12) with instruments. We use four instruments defined by taking the positive and negative parts, respectively, of the distance difference terms defined above. That is, our instruments are: $d(i_h, h, h')_+$, $d(i_h, h, h')_-$, $d(i_{h'}, h', h)_+$, $d(i_{h'}, h', h)_-$. These are clearly correlated with the variables of interest; the additional inequalities will therefore create variation that helps identify the model. We assume they are perfectly observed by the econometrician and known to the decision-maker when choices are made. (There is no endogeneity problem in the usual sense: all unobservables that affect the decision-makers' choice are differenced out when we sum the inequalities of different patients.) We note that multiplying by the negative instruments will reverse the sign of the inequality. The inequalities generated by the first two instruments $d(i_h, h, h')_+$ and $d(i_h, h, h')_-$ are therefore:

$$\theta_{p, \pi} \sum_{h \dots i_{h'}} p^o(i_h, i_{h'}, h, h') d(i_h, h, h')_+ \geq \sum_{h \dots i_{h'}} d(i_h, i_{h'}, h, h') d(i_h, h, h')_+ \tag{15}$$

$$-\theta_{p, \pi} \sum_{h \dots i_{h'}} p^o(i_h, i_{h'}, h, h') d(i_h, h, h')_- \geq - \sum_{h \dots i_{h'}} d(i_h, i_{h'}, h, h') d(i_h, h, h')_- \tag{16}$$

where $\sum_{\pi \dots i_{h'}}$ represents the same triple sum set out in equation (14) and $x(i_h, i_{h'}, h, h') = x(i_h, h, h') + x(i_{h'}, h', h)$. There are analogous inequalities for each of the two remaining instruments. Each defines a lower (upper) bound for $\theta_{p, \pi}$ if the price term is positive (negative).

³⁸We exclude from the analysis hospitals that have fewer than 50 switches with any other hospital in the analysis. When instruments are included, each pair of hospitals is required to have at least 50 switches whose value of the instrument is non-zero.

In a second step we add instruments based on price: the positive and negative parts of the price difference terms defined above. These create further variation which is very helpful to identify reasonably tight bounds on the coefficients. However they will generate biased estimates if (as we suspect) the price variable is measured with error. We report results with and without these price instruments.

7.3 Estimating the Variation in Discounts Across Insurers

The inequalities methodology addresses price endogeneity problems inherent in the logit analysis and, if price is not used as an instrument, addresses mean-zero price measurement error by summing over patients and hospitals. However, specification error in price caused by the unobserved variation in discounts across insurers has not yet been addressed.³⁹ We now introduce a method for correcting for the variation in hospital discounts across plans.

We begin with the average negotiated discount at the hospital level, d_h .⁴⁰ As noted above this is a weighted average of the discounts for both inpatient and outpatient services to both HMO and Point of Service (POS) insurers. We assume for the moment that the discount at the hospital-insurer level, $d_{\pi,h}$, does not differ across diagnoses for a given (π, h) pair; we will relax this assumption in the section on robustness tests below. We use data from the OSHPD hospital discharge and financial records for 2003 that are not used in the main analysis. First, we have discharge data covering all HMO inpatient events in the year 2003, including diagnoses other than labor and births. We observe a list price for every discharge. Second, the hospital financial reports include data on hospital h 's total charges (sum of list prices) for managed care (HMO and POS) inpatient services and separately for managed care outpatient services.

If $s_{\pi,h}$ ($s_{\pi,h}^o$) is the share of HMO π 's inpatient (outpatient plus POS inpatient) charges in hospital h we know that:

$$d_h = \sum_{\pi} s_{\pi,h} d_{\pi,h} + \sum_{\pi} s_{\pi,h}^o d_{\pi,h}^o \quad (17)$$

where $\sum_{\pi} (s_{\pi,h} + s_{\pi,h}^o) = 1$. We are constrained by lack of data on $s_{\pi,h}^o$. We therefore assume that $d_{\pi,h}^o = d_{\pi,h}$. Since $s_{\pi,h}^o = s_h s_{\pi,h} + e_{\pi,h}$ where $s_h \equiv \sum_{\pi} s_{\pi,h}^o / \sum_{\pi} s_{\pi,h}$, and can be calculated from the observed data, and $\sum_{\pi} e_{\pi,h} = 0$, this implies that

$$d_h = \sum_{\pi} (1 + s_h) s_{\pi,h} d_{\pi,h} + \tilde{e}_h \quad (18)$$

where $\tilde{e}_h = \sum_{\pi} e_{\pi,h} d_{\pi,h}$.

To proceed we need a specification for HMO inpatient discounts at different hospitals. We begin by writing

$$d_{\pi,h} = d_0 + \tilde{d}_h + \tilde{d}_{\pi,h}$$

³⁹Specification error at the hospital-severity level will be absorbed into the $g_{\pi}(\cdot)$ term; variation across c_i groups within hospital-severity will be in $\varepsilon_{i_h,\pi,h}$.

⁴⁰We conduct this analysis using the discount d_h rather than one minus the discount, which is defined above as $\delta_h^o = 1 - d_h$.

where $\forall h$, $\sum_{\pi} \tilde{d}_{\pi,h} = 0$, so that $d_0 + d_h$ is the mean hospital discount, and $\sum_h \tilde{d}_h = 0$ so that d_0 is the mean of the (mean) hospital discount (across hospitals). Our reduced form model for the mean hospital discount is

$$\tilde{d}_h = \left(\frac{\exp(X_{h,m}\beta^h)}{1 + \exp(X_{h,m}\beta^h)} - d_0 \right) + v_h \equiv \left(f(X_{h,m}, \beta^h) - d_0 \right) + v_h \quad (19)$$

where $X_{h,m}$ are hospital characteristics or their interactions with market characteristics and v_h is mean independent of $X_{h,m}$. The reduced form model for an insurers deviation from the mean discount is

$$\tilde{d}_{\pi,h} = \frac{\exp(X_{\pi,h,m}\beta^{\pi}) - \frac{1}{N_{\pi,h}} \sum_{\pi} \exp(X_{\pi,h,m}\beta^{\pi})}{\frac{1}{N_{\pi,h}} \sum_{\pi} \exp(X_{\pi,h,m}\beta^{\pi})} + v_{\pi,h} \equiv f(X_{\pi,h,m}\beta^{\pi}) + v_{\pi,h} \quad (20)$$

where $X_{\pi,h,m}$ are insurer characteristics and their interactions with market and hospital characteristics and where $v_{\pi,h}$ is mean independent of $X_{\pi,h,m}$ and $\forall h$, $\sum_{\pi} v_{\pi,h} = 0$ (since $\sum_{\pi} \tilde{d}_{\pi,h} = 0$).

Substituting these specifications into equation (18) generates the following equation which can be estimated using nonlinear least squares:

$$d_h = f(X_{h,m}, \beta^h) + \sum_{\pi} (1 + s_h) s_{\pi,h} f(X_{\pi,h,m}\beta^{\pi}) + e_h \quad (21)$$

where $e_h = \sum_{\pi} (1 + s_h) s_{\pi,h} v_{\pi,h} + v_h + \tilde{e}_h$.

The estimates, set out in Tables 5 and 6, are intuitive. Table 5 sets out the results when $X_{h,m}$ includes both hospital characteristics and market fixed effects. Model 1 includes insurer fixed effects; in Model 2 we collapse these into a fixed effect for high-capitation insurers (Pacificare together with Aetna, Health Net and Cigna), a fixed effect for Blue Cross and a continuous variable defined as the insurer's share of HMO enrollment in California.⁴¹ In both cases we find that for profit hospitals and hospitals that are members of systems (groups of providers that bargain jointly with insurers) have significantly higher discounts than other hospitals. At first sight this is surprising since a higher discount implies a lower price paid to the hospital. However, this is likely to be explained by the substantial variation in list prices across hospitals. We show in Table 6 of Ho and Pakes (2011) that for profit hospitals have higher prices net of discounts than not-for-profit hospitals. If we add an indicator for hospitals in systems to the regression we find that system hospitals, too, have significantly higher prices than other hospitals.⁴² These results indicate that, while discounts are high for system and for profit hospitals, list prices are higher, so that the net price paid conditional on severity is also relatively high for these providers.

⁴¹We use the share of enrollment at the state level rather than the market level to help avoid endogeneity problems due to insurers with high discounts in a particular market attracting high enrollment in that market.

⁴²The analysis controls for patient severity by using as a price measure the price ratio $p_i^{ratio} = \frac{p_i}{\bar{p}_{s_i}}$ where p_i is the price (list price multiplied by δ_h) for patient i and \bar{p}_{s_i} is the average price for same-severity patients across all hospitals in the sample. The results of these regressions are excluded from this paper to conserve space. They are available from the authors on request.

Other hospital characteristics such as indicators for teaching hospitals and hospitals that provide transplants (a measure of high-tech hospitals) are not significant in our analyses. The coefficient on a variable measuring the hospital’s share of beds in the market, a potential measure of hospital bargaining power, is negative as expected but not significant at $p=0.05$. The insurer fixed effects in Model 1 are all statistically insignificant and the magnitudes demonstrate no particular correlation between insurer capitation levels and discounts. In Model 2 the coefficient for high-capitation insurers is slightly negative, and that for Blue Cross is somewhat more negative compared to the excluded plan (Blue Shield) although neither coefficient is significant at $p=0.05$. The coefficient on HMO market share is positive (although again insignificant), consistent with a bargaining power story. We will use the results in Model 2 to calculate the predicted $\hat{\delta}_{\pi,h}$ that will be used in the inequalities analysis since they provide a somewhat smoother prediction of the variation in discounts across insurers than the results in Model 1. The hypothesis that Model 2 fits the data as well as Model 1 cannot be rejected in an F-test of size 0.05.⁴³

In Table 6 we replace the market fixed effects with market characteristics. We view this as an exploratory exercise to check that our results are consistent with the previous literature on the impact of hospital and insurer concentration on prices. Our results are similar to those in previous papers: we find that variables likely to be positively correlated with hospital bargaining power are negatively related to hospital discounts, while those positively related to insurer bargaining power are positively correlated with discounts. For example, in Model 3 we find that when market fixed effects are removed the positive coefficient on the insurer market share variable and the negative coefficient on hospital market share both become significant at $p=0.05$. Models 4-5 demonstrate that discounts are significantly higher in markets with more hospitals per thousand population and lower in markets with more insurers per 1000 population. In Models 6-7 we find that a high hospital share of the largest hospital and a low insurer share of the largest insurer are correlated with low discounts (although these two coefficients are not statistically significant). In these specifications we replace the hospital h and insurer π market share variables with the difference between the share of the largest hospital (insurer) and the share of this hospital (insurer). In both cases we estimate insignificant coefficients of the expected sign: positive for the hospital difference in shares and negative for the insurer share difference.⁴⁴

In additional specifications (results available from the authors) we repeat the analyses in Models 3-7 but replace the plan fixed effects with the plan percent capitation. This coefficient is positive but insignificant in every specification. The other coefficient estimates are qualitatively unaffected by this change. This lack of a significant relationship between discounts and the insurer’s percent capitated payments to physicians suggests that accounting for variation in discounts across insurers will not change the results of our inequalities analysis. We confirm this idea in the results section below. Note also that this implies that the effect of of capitation rates on hospital choice is unlikely

⁴³We also estimated the inequalities analysis using the discounts predicted by Model 1; the results were very similar to the main analyses reported below.

⁴⁴Hospital share of the largest hospital is measured as a share of beds in the market. Plan share of the largest plan is an endogenous variable: it is measured as share of enrollment in the relevant market.

to be impacted by the relationship between insurer capitation rates and the prices insurers pay at hospitals.

The final step is to use these estimates to generate a prediction for $d_{\pi,h}$. There are two possibilities. First, since

$$d_{\pi,h} \approx d_h - \sum_{\pi} (1 + s_h) s_{\pi,h} f(X_{\pi,h,m}, \hat{\beta}^{\pi}) + f(X_{\pi,h,m}, \hat{\beta}^{\pi}) + \left(v_{\pi,h} - \tilde{e}_h - \sum_{\pi} (1 + s_h) s_{\pi,h} v_{\pi,h} \right)$$

we define

$$\hat{d}_{\pi,h}^1 = d_h - \sum_{\pi} (1 + s_h) s_{\pi,h} f(X_{\pi,h,m}, \hat{\beta}^{\pi}) + f(X_{\pi,h,m}, \hat{\beta}^{\pi}) \quad (22)$$

and incur the error $e_{\pi,h}^1 = v_{\pi,h} - \tilde{e}_h - \sum_{\pi} (1 + s_h) s_{\pi,h} v_{\pi,h}$. Second, since:

$$d_{\pi,h} \approx f(X_{h,m}, \hat{\beta}^h) + \sum_{\pi} (1 + s_h) s_{\pi,h} f(X_{\pi,h,m}, \hat{\beta}^{\pi}) + (v_{\pi,h} + v_h)$$

we define

$$\hat{d}_{\pi,h}^2 = f(X_{h,m}, \hat{\beta}^h) + f(X_{\pi,h,m}, \hat{\beta}^{\pi}) \quad (23)$$

and incur the error $e_{\pi,h}^2 = v_{\pi,h} + v_h$. We use the predictions to define price measures $p^1(\cdot) = (1 - \hat{d}_{\pi,h}^1)lp^o(c_i, h)$ and $p^2(\cdot) = (1 - \hat{d}_{\pi,h}^2)lp^o(c_i, h)$ and use these in the inequalities analysis that follows. The errors $(1 - e_{\pi,h}^1)lp^o(c_i, h)$ and $(1 - e_{\pi,h}^2)lp^o(c_i, h)$, together with estimation error from this step and measurement error from the expected list price calculation, will be inputs into the error term $\varepsilon_{i_h, \pi, h}$ defined in Section 7.2.

While use of $p^1(\cdot)$ and/or $p^2(\cdot)$ as our price variable mitigates the problems that could arise from using a price variable that does not account for insurer-specific discounts, it probably does not eliminate them. To the extent that doctors know $v_{\pi,h}$ and select hospitals based on its value there will still be a selection bias in both of these price variables⁴⁵, and if doctors know v_h and select based on its value there will be an additional source of selection bias in $p^2(\cdot)$ ⁴⁶.

In addition to the remaining selection issues, there may also be remaining measurement error issues. An advantage of the moment inequality analysis is that it averages out mean zero measurement error. However at times it will be useful to use the positive and negative parts of price differences as instruments, and errors of measurement may cause errors in those classifications of

⁴⁵Only the component of $(1 - e_{\pi,h})lp^o(c_i, h)$ that differs across c_i groups within a hospital-severity pair will be absorbed into the error term rather than into $g_{\pi}(\cdot)$. However, the interaction with the list price implies that there will be some such variation and if decision-makers observe it this will cause endogeneity bias. We assume that \tilde{e}_h is unrelated to discounts and therefore not problematic here.

⁴⁶We did investigate the magnitude of the errors through a regression analysis. Note from equation (21) that

$$H^{-1} \sum_h e_h^2 \rightarrow_P \sigma_{\tilde{e}}^2 + \sigma_h^2 + \sum_{\pi} (1 + s_h)^2 s_{\pi,h}^2 \sigma_{\pi,h}^2$$

where $\sigma_{\tilde{e}}^2$ is the variance of \tilde{e}_h and similarly for σ_h^2 and $\sigma_{\pi,h}^2$. We regress e_h^2 on a constant term and $\sum_{\pi} (1 + s_h)^2 s_{\pi,h}^2$ and estimate a constant term of 0.0037 (standard error 0.0034) and an estimate of the coefficient on the X variable of 0.0286 (standard error 0.0107). We compare these numbers to the variance in d_h , a lower bound on the unobserved variance in $d_{\pi,h}$, which is 0.022. We conclude that the variance in $v_{\pi,h}$ is likely larger in magnitude than that of v_h .

the sort analyzed in Pakes (1982). We partially address this issue, by using one discount prediction (e.g. $\hat{d}_{\pi,h}^1$) as the price measure and generating price instruments with the other (e.g. $\hat{d}_{\pi,h}^2$). However, again this mitigates rather than solves the problem.

Finally, it may be that our assumption that the discount $d_{\pi,h}$ does not differ across diagnoses is incorrect. In that case using a prediction of the average discount at the (π, h) level to predict labor / birth prices may imply incorrect price comparisons across hospitals. This too could lead to endogeneity bias. We address this issue in the robustness tests below, under some additional assumptions, by allowing discounts for labor / birth episodes to be different from the average for other diagnoses.

It is clear that all of our price measures are imperfect. Our approach to this problem is to provide several sets of results based on different measures of price. The different measures should be differentially related to the biases discussed above, so by looking across results we should be able to tell something about the likely magnitude of the resulting biases.

7.4 Inequality Results

Table 7 reports the results of the inequalities analysis. (Confidence intervals are not yet included; they will be added in the next iteration of the paper.) In each case we use the detailed definitions of severity and price described in Section 7.1. In the first panel we use the price measure defined using the observed hospital-level discount: $p(\cdot) = \delta_h^o lp^o(c_i, h) = (1 - d_h)lp^o(c_i, h)$. In the second and third panels we address price specification error by using the hospital-insurer level discounts estimated in the previous section: $p^1(\cdot) = (1 - \hat{d}_{\pi,h}^1)lp^o(c_i, h)$ and $p^2(\cdot) = (1 - \hat{d}_{\pi,h}^2)lp^o(c_i, h)$. Within each panel we report results first using only the four instruments derived from the distance variable (and a constant term). We then add the four instruments derived from the relevant price variable. Finally, in panels 2 and 3 we replace the price instruments defined using the "same price" variable with the "other price" instruments described above.

In the first column of results in panel 1, where no price instruments are used, the inequalities generate only an upper bound for the price coefficient for most insurers. In spite of this, however, the results are quite informative. Higher-capitation insurers have more negative ranges for the price coefficient: in particular the coefficients for Pacificare, Aetna, Health Net and Cigna are clearly negative while those for Blue Cross and Blue Shield are not. Column 2 adds "same price" instruments. As expected these are helpful in identifying relatively tight bounds for the price coefficient: we now have both an upper and a lower bound for every insurer. The overall story is unchanged. In fact the estimated upper bound is identical to the previous estimate in four out of six cases.⁴⁷

The results in panels 2 and 3 are quite consistent with panel 1. Again the model with no price instruments generates only an upper bound for $\theta_{p,\pi}$ in most cases, and instrumenting with the same

⁴⁷For Cigna we now find that the estimated upper bound for $\theta_{p,\pi}$ is more negative than the lower bound. This does not necessarily imply that the model is misspecified; the unobservables in the individual moments are likely to generate this result when the number of moments increases. We follow the methodology outlined in Pakes, Porter, Ho and Ishii (2011) to identify the point estimate that minimizes the amount by which the inequalities are violated.

price measure introduces lower bounds without changing the overall story. The magnitudes of the estimates are very similar across panels 2 and 3. The bounds are noticeably tighter than in panel 1 in two of the insurers, and only looser for Blue Shield (the only not for profit insurer in our data)⁴⁸. So the discount information does seem helpful. In Column 3 of the table we introduce the "other price" instruments and again generate very similar results. We interpret the small effect of the price instruments as evidence that measurement error in the price variable is not too important in this application. The similarity across the panels suggests that specification error in the discount variable, too, is of limited importance.⁴⁹

These results indicate that insurers with weakly more than 75% capitated payments to primary physicians have hospital referral processes that place a negative weight on prices. In contrast to the logit analysis, we did not need to subset by sickness level to generate this result. In Figure 1 we plot insurer capitation levels against the estimated upper and lower bounds for $\theta_{p,\pi}$.⁵⁰ We also plot the best linear fit to the estimates. As expected this is a downwards-sloping line: the price coefficient is estimated to be decreasing in the proportion of physician payments that are capitated.

As expected, the price coefficients are more negative than those estimated in the logit analysis. Again we interpret magnitudes by finding the cross-patient average of $\eta_i = \frac{\partial d_i}{\partial p_i} \frac{p_i}{d_i}$, or the distance reduction required to compensate the patient for an incremental price increase at fixed utility, considering Pacificare in particular. The logits implied an average η_i of 0.33. When we repeat the calculation using the mid-point of the range of values implied by the inequalities methodology the average value for Pacificare is 10.60. That is, a 10.6 percent reduction in distance to hospital is required to hold utility fixed when price increases by 1 percent.⁵¹

We repeated the inequalities analysis separately for less sick and sicker patients, using the same definitions as in the logits, and found that the price coefficients were not substantially different across the two groups. This is consistent with our assumption that, while the weight placed on hospital quality by the physician/consumer agent making the hospital choice might differ across patient sickness levels, that placed on price by the physician does not.

7.5 Robustness Tests and Alternative Explanations

We conduct several robustness tests. First, we note above that our estimates may be biased if in reality the discounts negotiated at the (π, h) level differ across diagnoses; interview evidence indicates that this is likely for some hospital-insurer pairs. We address this possibility by estimating a more detailed model of discounts that permits the discount for labor and birth episodes to differ

⁴⁸As a not for profit insurer, Blue Shield may have a different process of negotiating prices from other insurers.

⁴⁹One final piece of evidence is the similarity in results between panels 2 and 3. The two price estimates incur different errors $e_{\pi,h}^1$ and $e_{\pi,h}^2$ (for example $e_{\pi,h}^2$ contains v_h but $e_{\pi,h}^1$ does not), so if the errors were important we would expect the two panels to generate different results.

⁵⁰We use the model in panel 2 of Table 7 that includes "other price" instruments

⁵¹If we use the upper bound of the price coefficient interval the average η_i falls to 7.39. We repeat this analysis for Cigna, which has a lower proportion of capitated payments than Pacificare. Under the logit analysis the average η_i is 0.104; under the inequalities the value implied by the mid-point of the price coefficient interval is 7.56.

from the average for other diagnoses by a factor γ to be estimated:

$$d_{\pi,h} = \left(1 - s_{\pi,h}^{birth}\right) d_{\pi,h} + s_{\pi,h}^{birth} \gamma d_{\pi,h}.$$

We assume that outpatient visits never include a birth episode and that the share of charges from π to h that relate to births is the same for POS plans as for HMO plans (the latter value, which we denoted $s_{\pi,h}^{births}$, is observed in the data). If we also assume that $s_{\pi,h}^{OP} = s_h^{OP} \forall h$, where $s_{\pi,h}^{OP}$ is the share of HMO-outpatient plus POS charges from π to h that are outpatient and s_h^{OP} is the equivalent variable at the hospital level then we can derive an equation for estimation analogous to equation (21):

$$d_h = f(X_{h,m}, \beta^h) + \sum_{\pi} (1 + s_h) s_{\pi,h} f(X_{\pi,h,m}, \beta^{\pi}) + (1 + s_h(1 - s_h^{OP}))(\gamma - 1) \sum_{\pi} s_{\pi,h} s_{\pi,h}^{births} (f(X_{h,m}, \beta^h) + f(X_{\pi,h,m}, \beta^{\pi})) + e_h^{rob}$$

Using a nonlinear least squares methodology we estimate the magnitude of γ to be 1.058 (S.E. 0.233). That is, births are estimated to have a 6% higher discount than the average for other diagnoses. The other coefficients differ very little from the baseline specification. We repeat the inequalities analysis using the prices for labor and birth episodes implied by this specification. The effect on the final results is very small.⁵²

Our second robustness test relates to potentially endogenous quantity. Since the referring physician has some input into the quantity and type of care provided in the hospital, our results could be caused by physicians responding to incentives by providing less care to capitated patients, rather than by referring them to lower-priced hospitals. We investigate this issue by regressing list price on the insurer's percent capitation payments to physicians and market or hospital fixed effects.⁵³ When we include market fixed effects we estimate a negative and significant coefficient on the capitation variable (coefficient -0.068, standard error 0.012), consistent with physicians either referring capitated patients to lower-priced hospitals or providing less care to them than to other similar patients. When we use hospital fixed effects the capitation coefficient becomes small, positive and statistically insignificant (coefficient estimate 0.007, standard error 0.011), suggesting that capitated patients do not receive less care than other same-severity patients in the same hospital. We conclude that our results are related to hospital referrals rather than to treatment decisions conditional on referral.

We note that these regressions, which use list prices rather than negotiated prices to generate the dependent variable, provide some information on the mechanism by which low-priced hospitals are identified. List prices seem to be important. That is, our results do not come solely from HMOs

⁵²We also investigate specifications where γ is defined as a linear function of hospital characteristics but none of the coefficients other than the constant term are statistically significant.

⁵³We control for patient severity by using a list price ratio measure analogous to the price ratio variable used in Ho and Pakes (2011): $lp_i^{ratio} = \frac{lp_i}{lp_{s_i}}$, where lp_i is the observed list price for patient i and lp_{s_i} is the average list price for same-severity patients.

negotiating particularly high discounts with some hospitals and physicians referring patients to those hospitals.

Finally, given that we observe only a cross-section of data with no physician identifiers, it is possible that our results are due to unobserved differences between the insurers in our data. As noted above, while Blue Shield and Blue Cross (the carriers with the lowest percent capitation) were historically different from other insurers, these differences have decreased over time. The data in Table 2 indicate that the "Blue" plans are no longer major providers of Medicare services in California. Blue Cross did provide Medi-Cal coverage (the California equivalent of Medicaid) in 2002 but 3.5 million of its 4.8 million enrollees were in its commercial plans. Blue Shield had no Medi-Cal enrollees. Blue Cross was a for-profit organization. Our assumption is that, while the historical differences between the "Blue" plans and other California insurers may be partly responsible for the variation in capitation payments used to identify our model, they do not generate differences in physician referral patterns directly. Similarly, we assume that our results are not caused by physicians who are affiliated with high-cost hospitals selecting into low-capitation insurers. We explain above the reasons why the alternative causal explanation seems just as likely.

8 Conclusion

We have estimated the price coefficient in the hospital utility equation using two methodologies: a multinomial logit analysis and an analysis based on inequalities. The inequalities method has several advantages compared to the logit. It enables us to control more fully for price endogeneity and price measurement issues and also implies no distributional assumptions on the unobservables. The latter is a potentially important benefit in discrete choice settings. Finally we are able to allow for selection of unobservably different types of patients into different insurers in a flexible way that is not possible using logit techniques.

Both methodologies indicate that the price coefficient is negative for patients whose insurers make predominately capitation-based payments to physicians but not for other patients. The inequalities analysis indicates that these results hold on average for all women in labor, not just the least sick. The results have important implications for the coming health reforms, which introduce similar financial incentives for physicians providing Medicare and Medicaid services.

We note that in addition to generating cost-control incentives the financial arrangements introduced by the 2010 health reforms, like those used in California, introduce some risk of physician group bankruptcy. During the late 1990s many Californian physician groups that accepted capitation payments, some of which were well-established and well-known to patients, went out of business. Reports in the press and the health policy literature noted that these groups often encountered problems with managing a significant amount of insurance risk.⁵⁴ In response to this wave of failures the California Legislature passed several managed care bills in 1999 which required physician groups to maintain positive working capital and positive tangible net equity and

⁵⁴See Baumgarten (2004), Bodenheimer (2000) and Robinson (2001) for details.

established a Department of Managed Health Care to oversee the financial condition of physician groups. Since then the financial stability of physician groups has improved (although the number of capitated HMO patients has fallen as some patients switched to other types of insurance). If the accountable care organizations and bundling arrangements set up by the current health reforms are to be successful, policy makers need to fully understand the issues that caused these problems in California. We leave this as a topic for future research.

References

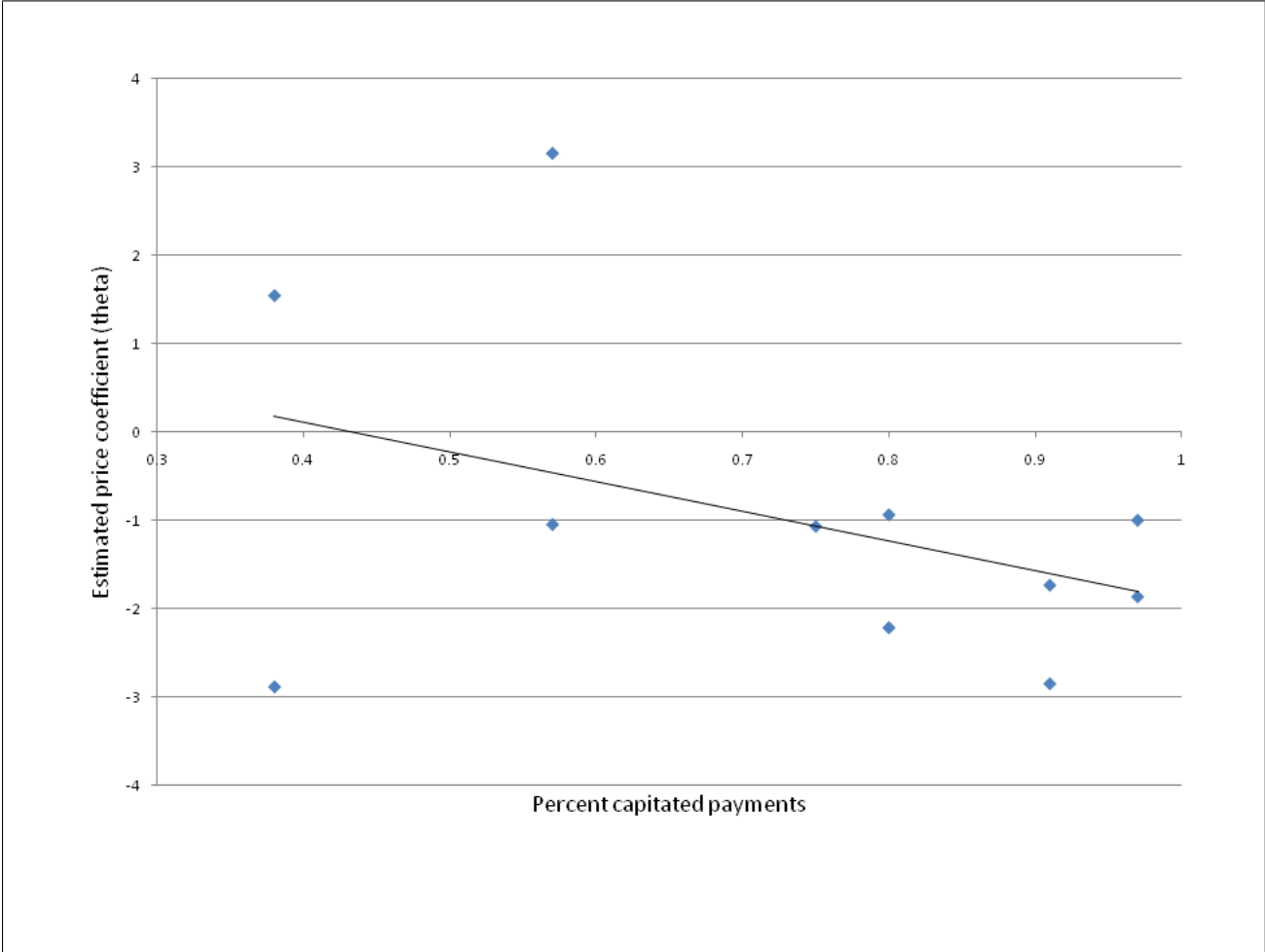
1. Adamache KW and FA Sloan. 1983. "Competition between non-profit and for-profit health insurers". *Journal of Health Economics*, 2:225-243.
2. Armour B., Pitts M., Maclean R., Cangialose C., Kishel M., Imai H. and J. Etchason. 2001. "The Effect of Explicit Financial Incentives on Physician Behavior." *Arch Intern Med*, 161: 1261-1266.
3. Baumgarten, A. 2004. "California Health Care Market Report 2004", prepared for the California HealthCare Foundation, <http://www.chcf.org/topics/view.cfm?itemID=114640>
4. Bodenheimer T. 2000. "California's Beleaguered Physician Groups - Will They Survive?" *The New England Journal of Medicine*, 342(14); 1064-1068.
5. Brooks JM, Dor A. and HA Wong. 1997. "Hospital-Insurer Bargaining: An Empirical Investigation of Appendectomy Pricing". *Journal of Health Economics*, 16: 417-434.
6. Burgess JF, Carey K and GJ Young. 2005. "The Effect of Network Arrangements on Hospital Pricing Behavior". *Journal of Health Economics*, 24: 391-405.
7. Burns LR. and Wholey DR. 1992. "The Impact of Physician Characteristics in Conditional Choice Models for Hospital Care". *Journal of Health Economics*, 11: 43-62.
8. Capps C., Dranove D. and Satterthwaite M. 2003. "Competition and Market Power in Option Demand Markets." *RAND Journal of Economics*. 34(4): 737-763.
9. Charlson ME, Pompei P, Ales KL, MacKenzie CR. "A new method of classifying prognostic comorbidity in longitudinal studies: development and validation." *J Chronic Dis*. 1987;40:373-83.
10. Connor R., Feldman R. and B. Dowd. 1998. "The effects of market concentration and horizontal mergers on hospital costs and prices". *International Journal of Economics and Business*. 5: 159-180.

11. Cromwell J, Dayhoff DA, McCall NT, Subramanian S, Freitas RC, Hart RJ, Caswell C and W Stason. 1998. *Medicare Participating Heart Bypass Demonstration: Final Report*, Washington, DC: Centers for Medicare & Medicaid Services.
12. Cutler DM, McClellan M and JP Newhouse. 2000. "How Does Managed Care Do It?" *RAND Journal of Economics*, 31(3): 526-548.
13. Dranove D. and MA Satterthwaite. 2000. "The Industrial Organization of Health Care Markets". In: Schmalensee R., Willig RD. (eds.), *Handbook of Industrial Organization*, edition 3, volume 2, chapter 20, Elsevier, Amsterdam.
14. Dranove D., Shanley M. and W.D. White. 1993. "Price and concentration in local hospital markets: the switch from patient-driven to payer-driven competition." *Journal of Law and Economics*. 36: 179-204.
15. Escarce JJ., Kapur K., Joyce GF and Van Vorst, KA. 2001. "Medical Care Expenditures under Gatekeeper and Point-of-Service Arrangements." *Health Services Research*, 36(6 Pt 1), 1037-57.
16. Feldman R. and W. Greenberg. 1981. "The relation between the Blue Cross Share and the Blue Cross "discount" on Hospital Charges". *Journal of Risk and Insurance*, 48: 235-246.
17. Foreman SE., Wilson JA and RM Scheffler. 1996. "Monopoly, Monopsony and Contestability in Health Insurance: A Study of Blue Cross Plans", *Economic Inquiry*, 34: 662-677.
18. Franzini L., Mikhail I. and J.S. Skinner. 2010. "McAllen and El Paso Revisited: Medicare Variations Not Always Reflected in the Under-Sixty-Five Population." *Health Affairs* 29(12): 2302-2309.
19. Gaynor M., Rebitzer JB. and Taylor LJ. 2001. "Physician Incentives in Health Maintenance Organizations." *Journal of Political Economy*, 112(4): 915-931.
20. Gaynor M. and Vogt WB. 2003. "Competition among Hospitals." *RAND Journal of Economics*. 34(4): 764-85.
21. Gaynor M. and Vogt WB. 2000. "Antitrust and competition in health care markets." *Handbook of Health Economics*, in: A. J. Culyer & J. P. Newhouse (ed.), *Handbook of Health Economics*, edition 1, volume 1, chapter 27, pages 1405-1487 Elsevier.
22. Glied, S. 2000. "Managed Care". *Handbook of Health Economics*, in: A. J. Culyer & J. P. Newhouse (ed.), *Handbook of Health Economics*, edition 1, volume 1, chapter 13, pages 707-753 Elsevier.
23. Goldman, D. and J.A. Romley. 2008. "Hospitals as Hotels: The Role of Patient Amenities in Hospital Demand." NBER working paper #14619.

24. Gosden T., Pedersen L. and D. Torgerson. 1999. "How should we pay doctors? A systematic review of salary payments and their effect on doctor behavior." *Q J Med*, 92: 47-55.
25. Grumbach K., Chattopadhyay A. and A. Bindman. 2009. "Fewer and More Specialized: A New Assessment of Physician Supply in California." *California Health Care Foundation*. Available at <http://www.chcf.org/publications/2009/06/fewer-and-more-specialized-a-new-assessment-of-physician-supply-in-california>.
26. Grumbach K., Coffman J., Vranizan K., Blick N. and E. O'Neil. 1998. "Independent Practice Association Physician Groups in California." *Health Affairs*, 17(3): 227-237.
27. Grumbach K., Osmond D., Vranizan K., Jaffe D. and A. Bindman. 1998. "Primary Care Physicians' Experience of Financial Incentives in Managed-Care Systems." *The New England Journal of Medicine*, 339(21): 1516-1521.
28. Hammelman E., Ipakchi N., Snow J. and B. Atlas. 2009. "Reforming Physician Payments: Lessons from California." *California HealthCare Foundation Issue Brief*, September 2009.
29. Ho, K. 2006. "The Welfare Effects of Restricted Hospital Choice in the U.S. Medical Care Market", *Journal of Applied Econometrics* 21(7): 1039-1079.
30. Ho, K. 2009. "Insurer-Provider Networks in the Medical Care Market", *American Economic Review* 99(1): 393-440.
31. Ho K. and A. Pakes. 2011. "Do Physician Incentives Affect Hospital Choice? A Progress Report". Forthcoming in *International Journal of Industrial Organization*.
32. Keeler E., Melnick G. and J. Zwanziger. 1999. "The Changing Effects of Competition on Non-Profit and For-Profit Hospital Pricing Behavior". *Journal of Health Economics*, 18: 69-86.
33. Kessler DP. and McClellan MB. 2000. "Is Hospital Competition Socially Wasteful?" *Quarterly Journal of Economics*, 115: 577-615.
34. Luft HS., Garnick DW., Mark DH., Peltzman DJ., Phibbs CS., Lichtenberg E. and McPhee SJ. 1990. "Does Quality Influence Choice of Hospital?" *The Journal of the American Medical Association*, 263(21): 2899-2906.
35. Lynk WJ and LR Neumann. 1999. "Price and Profit". *Journal of Health Economics*, 18: 99-105.
36. Melichar, I. 2009. "The effect of reimbursement on medical decision making: Do physicians alter treatment in response to a managed care incentive?" *The Journal of Health Economics*, 28: 902-907.

37. Melnick G. 2004. "Hospital Pricing and the Uninsured", Testimony Before the Subcommittee on Health of the House Committee on Ways and Means. March 9, 2004. Serial 108-50. Available at <http://waysandmeans.house.gov/Hearings/transcript.aspx?NewsID=9874#Melnick>.
38. Melnick GA, Zwanziger J, Bamezai A and R. Pattison. 1992. "The effects of Market Structure and Bargaining Position on Hospital Pricing". *Journal of Health Economics*, 11(3): 217-233.
39. Meyers D.S., Mishori R., McCann J., Delgado J., O'Mally A.S. and E. Fryer, "Primary Care Physicians' Perceptions of the Effect of Insurance Status on Clinical Decision Making", *Annals of Family Medicine* 4(5): 399-402.
40. Pakes A. 1982. "On the Asymptotic Bias of Wald-Type Estimates of a Straight Line when both Variables are Subject to Error," *International Economic Review* 23(2): 491-497.
41. Pakes A., Porter J., Ho K. and J. Ishii. 2011. "Moment Inequalities and Their Estimation". Harvard University working paper.
42. Robinson J. 2001. "Physician Organization in California: Crisis and Opportunity." *Health Affairs*, 20(4): 81-96.
43. Robinson J. and L. Casalino. 2001. "Reevaluation of Capitation Contracting in New York and California." *Health Affairs Web Exclusive*, W11-W19.
44. Rosenthal M., Frank R., Buchanan J. and A. Epstein. 2001. "Scale and Structure of Capitated Physician Organizations in California." *Health Affairs*, 20(4): 109-119.
45. Rosenthal M., Frank R., Buchanan J. and A. Epstein. 2002. "Transmission of Financial Incentives to Physicians by Intermediary Organizations in California." *Health Affairs*, 21(4): 197-205.
46. Simpson J and R. Shin. 1998. "Do Nonprofit Hospitals Exercise Market Power?" *International Journal of Economics and Business*, 5: 141-158.
47. Spiller E. 2011. "Household Vehicle Bundle Choice and Gasoline Demand: A Discrete-Continuous Approach." Duke University working paper.
48. Staten M, Dunkelberg W and J. Umbeck. 1987. "Market Share and the Illusion of Power: Can Blue Cross force Hospitals to Discount?" *Journal of Health Economics*, 6:43-58.
49. Staten M, Dunkelberg W and J. Umbeck. 1988. "Market Share / Market Power Revisited, A New Test for an Old Theory" *Journal of Health Economics*, 7:73-83.
50. Tay, A. 2003. "Assessing Competition in Hospital Care Markets: The Importance of Accounting for Quality Differentiation." *RAND Journal of Economics* 34: 786-814
51. Town R. and Vistnes G. 2001. "Hospital Competition in HMOs." *Journal of Health Economics* 20: 733-753.

Figure 1: Correlation of Estimated Price Coefficient with Insurer's Percent Capitation Payments



Notes: Graph to illustrate correlation between estimated upper and lower bounds for price coefficients, reported in Table 7, and insurer percent capitation. Black line indicates best linear fit. Estimates are from model where $p(\cdot) = (1 - \hat{d}_{\pi,h}^1)lp(c_i, h)$ and where "other price" instruments are included.

Table 1: Summary Statistics by Insurer

	2002 enrollment		Labor discharg	% Prim Capitn	Tax Status	Premium pmpm	Admin expense	Medical loss ratio	Inpatient discha	Inpatient utilizn days	Prescrip drugs	
	Commerc	Medicare										Medi-Cal
Aetna	485,787	37,312	0	6,291	0.91	FP	152.42	19.33	86.2%	38.4	139.8	23.15
Blue Cross	3,486,358	251,299	1,099,044	25,038	0.38	FP	186.86	21.22	78.9%	38.4	142.4	20.92
Blue Shield	2,231,350	67,049	0	16,302	0.57	NFP	146.33	22.72	83.5%	50.3	176.4	20.51
Cigna	634,568	0	0	8,097	0.75	FP	-	27.07	84.6%	39.8	137.1	15.63
Health Net	1,665,221	101,317	349,826	16,950	0.80	FP	184.92	18.60	86.3%	39.0	137.8	21.08
Pacificare	1,543,000	386,076	0	15,479	0.97	FP	149.92	24.51	88.4%	44.5	156.5	20.48
Kaiser	5,790,348	671,858	104,844	0	NFP	163.44	5.23	97.7%	49.1	158.1	0.44	

Notes: Data on the six insurers included in our analysis and on Kaiser Permanente; the latter is excluded from our later analysis because the prices paid to hospitals are not reported. Source for all fields except Labor discharges and % primary capitation: Baumgarten (2004). 2002 enrollment provided separately for commercial plans, Medicare plans and Medi-Cal/Healthy Families plans. "Labor discharg" is the number of discharges in the data sample used in our analyses. "% Prim Capitn" is the percent of payments to primary providers made on a capitated basis in 2003 (source: State of California Department of Managed Health Care Annual Financial Reporting Forms, 2003). "Profit Margin" is net income (after taxes and including investment income) divided by revenues for entire insurer in 2002, "Admin expense" is per member per month administrative expenses for entire insurer in 2002, "Medical loss ratio" is medical and hospital expenses divided by premium revenues for entire insurer in 2002. Inpatient utilization and prescription drug data are for commercial plan only in 2002: "discha" is discharges per 1000 members, "days" is acute days per 1000 members and "Prescrip drugs" is outpatient prescription drug expenses per member per month.

Table 2: Summary Statistics by Discharge

	Labor only	
	Mean	Std. Devn.
Number of patients	88,157	
Number of hospitals	195	
Number of insurers	6	
Hospitals per patient choice set	38	
Teaching hospital	0.27	
Distance to all hospitals (miles)	24.6	25.6
Distance to chosen hospital	6.7	10.3
List price	\$13,312	\$13,213
List price*(1-discount)	\$4,317	\$4,596
Length of stay	2.54	2.39
Died	0.01%	0.004%
Acute transfer	0.3%	0.02%
Special Nursing Transfer	1.5%	0.04%

Notes: Summary statistics for dataset comprising private enrollees of the six largest HMOs excluding Kaiser who are admitted for labor-related diagnoses. "Died" is the probability of death while in hospital, "Acute Transfer" the probability of transfer to an acute care setting (in this or a different hospital) and "Special Nursing Transfer" the probability of transfer to a special nursing facility (again at this or a different hospital). "Std Devn" for "Died", "Acute transfer" and "Special Nursing Transfer" are calculated under the assumption that the 0/1 variable is binomially distributed.

Table 3: Prices and Outcomes by Patient Type

		N	Price*(1-disc)	Acute Transfer	Special Nursing
Age					
	<40	84130	4269 (4488)	0.3% (0.0%)	1.49% (0.0%)
	>40	4027	5310 (6373)	0.5% (0.1%)	1.54% (0.2%)
Signif diff			0.000	0.009	0.797
Charlson					
	0	86326	4276 (4501)	0.3% (0.0%)	1.5% (0.0%)
	1	1753	6079 (7060)	0.6% (0.2%)	2.3% (0.4%)
	>1	78	10022 (15186)	5.1% (2.5%)	12.8% (3.8%)
Signif diff (0 to 1)			0.000	0.005	0.003
Signif diff (1 to >1)			0.000	0.000	0.000

Notes: Labor diagnosis only. See notes to Table 1 for variable definitions. Standard deviations in parentheses; for Acute Transfer and Special Nursing these are standard errors calculated assuming that the 0/1 variables are binomially distributed. Charlson scores assign weights to comorbidities (known on admission to hospital) other than principal diagnosis where higher weight indicates higher severity. Value 0-6 are observed in the data. "Signif diff" states significance level at which we cannot reject the hypothesis that the means in the two samples are the same; these are the results of a t-test for price*(1-discount) and a z-test assuming two binomial distributions for Acute Transfer and Special Nursing.

Table 4: Logit Analysis Results

	All labor patients	Least sick patients	Sickest patients
Price	0.010** (0.002)	-0.017* (0.009)	0.012** (0.002)
Price interactions:			
% Capitated		0.069** (0.014)	0.028** (0.006)
Pacificare		-0.127** (0.016)	-0.025** (0.008)
Aetna		-0.077** (0.01)	-0.006 (0.006)
Health Net		-0.011 (0.016)	0.021** (0.008)
Cigna		-0.038** (0.01)	0.007 (0.005)
Blue Shield		-0.021 (0.014)	0.004 (0.007)
Blue Cross		0.018 (0.011)	0.024** (0.004)
		0.008 (0.011)	0.014** (0.003)
Distance	-0.215** (0.001)	-0.215** (0.002)	-0.216** (0.002)
Distance squared	0.001** (0.000)	0.001** (0.000)	0.001** (0.000)
$z_h x_i$ controls	Y	Y	Y
Hospital F.E.s	Y	Y	Y
N	88,157	43,742	44,059
		43,742	44,059
			44,059
			44,059

Notes: N is the number of patients. Least sick patients are defined as those aged 20-39, with zero Charlson scores and both principal diagnoses and all comorbidities defined by obstetrical experts to be "routine" (see Appendix 1 for details). Sickest patients are all other patients. $z_h x_i$ are interactions between observed hospital characteristics (indicators for teaching hospitals, for profit hospitals and hospitals that offer transplants, the number of nurses per bed and a variable that summarizes the quality of labor services provided) and patient characteristics (the probabilities of death while in hospital, transfer to an acute care facility and transfer to a special nursing facility conditional on principal diagnosis, age category and Charlson score, all of which are known to the patient ex ante).

Price and distance coefficients are reported from multinomial logit demand analysis.

Table 5: NLLS Analysis of Discount Variation

	percent capitated	Model 1 Coefft	(S.E.)	Model 2 Coefft	(S.E.)
Hospital Characteristics					
Constant		-0.07	(0.30)	-0.14	(0.29)
Teaching hospital		-0.03	(0.11)	-0.06	(0.11)
Cost per admission		-0.01	(0.01)	-0.01	(0.01)
For profit		0.44**	(0.12)	0.43**	(0.12)
Offers transplants		-0.05	(0.17)	-0.03	(0.17)
System hospital		0.26**	(0.11)	0.26**	(0.12)
Share of beds in mkt		-12.32	(7.83)	-11.46	(8.16)
Insurer Characteristics					
Pcare/Aetna/HN/Cigna				-0.11	(0.07)
Pacificare	0.97	-0.04	(0.13)		
Aetna	0.91	0.09	(0.20)		
Health Net	0.80	0.12	(0.15)		
Cigna	0.75	-0.42	(0.23)		
Blue Shield	0.57	0.11	(0.15)		
Blue Cross	0.38	0.00	(0.12)	-0.36	(0.22)
Share in CA				1.77	(1.32)
Market FEs?		Yes		Yes	
pseudo-R ²		0.46		0.45	
Number hospitals		144		144	

Notes: NLLS analysis of variation in hospital discounts d_h across hospitals, insurers and markets. Equation for estimation is $d_h = f(X_{h,m}, \beta^h) + \sum_{\pi} (1 + s_h) s_{\pi,h} f(X_{\pi,h,m}, \beta^{\pi}) + e_h$ where $f(X_{h,m}, \beta^h) = \frac{\exp(X_{h,m}\beta^h)}{1 + \exp(X_{h,m}\beta^h)}$ and $f(X_{\pi,h,m}, \beta^{\pi}) = \frac{\exp(X_{\pi,h,m}\beta^{\pi}) - \frac{1}{N_{\pi,h}} \sum_{\pi} \exp(X_{\pi,h,m}\beta^{\pi})}{\frac{1}{N_{\pi,h}} \sum_{\pi} \exp(X_{\pi,h,m}\beta^{\pi})}$. "Cost per admission" is average hospital cost per admission in \$000. "Share in CA" is insurer's share of HMO enrollment in California. pseudo-R² is 1 - (SSR from full model / SSR from model including only a constant). ** = significant at p=0.05;

*=significant at p=0.10.

Table 6: NLLS Analysis of Discount Variation: Market Characteristics

	Model 3		Model 4		Model 5		Model 6		Model 7	
	Coefft	(S.E.)	Coefft	(S.E.)	Coefft	(S.E.)	Coefft	(S.E.)	Coefft	(S.E.)
Hospital Charas:										
Constant	0.54**	(0.20)	0.13	(0.30)	-0.26	(0.32)	-0.29	(0.31)	-0.29	(0.32)
Teaching hospital	0.05	(0.09)	0.08	(0.09)	0.01	(0.10)	0.01	(0.10)	0.03	(0.11)
Cost per admission	-0.03**	(0.01)	-0.02**	(0.01)	-0.02**	(0.01)	-0.02**	(0.01)	-0.01	(0.01)
For profit	0.50**	(0.12)	0.53**	(0.12)	0.52**	(0.11)	0.52**	(0.11)	0.63**	(0.13)
Offers transplants	0.03	(0.15)	0.03	(0.15)	-0.01	(0.15)	-0.01	(0.16)	-0.11	(0.17)
System hospital	0.20**	(0.12)	0.20**	(0.12)	0.21**	(0.12)	0.21**	(0.12)	0.26**	(0.12)
Share of beds in mkt	-10.17**	(4.55)	-13.87**	(4.69)	-7.56	(6.22)				
"Max - this hosp" bed share							8.32	(9.19)	6.24	(9.65)
Market Charas:										
Hosps per 1000 popl			69.06**	(39.60)	172.39**	(53.61)	175.95**	(55.15)	64.17	(88.72)
Plans per 1000 popl					-81.83**	(36.32)	-84.97**	(41.38)	-2.01	(62.02)
Hosp share largest hosp							-7.66	(6.41)	-10.44	(6.84)
Plan share largest plan									3.36	(2.05)
Insurer Charas:										
Pcare/Aetna/HN/Cigna	-0.11	(0.07)	-0.07	(0.07)	-0.06	(0.07)	-0.06	(0.07)	0.01	(0.08)
Blue Cross	-0.55**	(0.22)	-0.48**	(0.24)	-0.45	(0.24)	-0.46	(0.25)	-0.08	(0.15)
Share in CA	3.48**	(1.45)	3.14**	(1.51)	2.92**	(1.55)	2.99*	(1.54)		
"Max - this plan" share									-0.50	(1.22)
pseudo-R ²	0.33		0.34		0.36		0.36		0.36	
Number hospitals	144		144		144		144		144	

Notes: NLLS analysis of variation in hospital discounts d_h across hospitals, insurers and markets. See notes to Table 5 for details. "Max - this hosp bed share" is the difference between the largest hospital's share of beds and this hospital's share of beds in the market. "Max - this plan share" is difference between the share of enrollment of the largest plan in the market and this plan's share. ** = significant at p=0.05; * = significant at p=0.10.

Table 7: Results of Inequalities Analysis

	percent capitated	No price insts [θ_{LB} , θ_{UB}]		"Same price" insts [θ_{LB} , θ_{UB}] θ_{point}			"Other price" insts [θ_{LB} , θ_{UB}] θ_{point}	
$p(\cdot) = (1 - d_h)lp(c_i, h)$								
Pacificare	0.97	[-,	-1.04]	[-1.88,	-1.04]			
Aetna	0.91	[-,	-1.39]	[-4.30,	-1.39]			
Health Net	0.80	[-,	-0.92]	[-2.15,	-0.92]			
Cigna	0.75	[-29.43,	-2.74]	[-1.29,	-2.74]	-1.29		
Blue Shield	0.57	[-69.79,	2.00]	[-0.66,	1.51]			
Blue Cross	0.38	[-,	1.95]	[-3.42,	1.80]			
$p(\cdot) = (1 - \hat{d}_{\pi,h}^1)lp(c_i, h)$								
Pacificare	0.97	[-,	-1.00]	[-1.91,	-1.00]		[-1.87,	-1.00]
Aetna	0.91	[-,	-1.74]	[-2.80,	-1.74]		[-2.86,	-1.74]
Health Net	0.80	[-,	-0.94]	[-2.26,	-0.94]		[-2.22,	-0.94]
Cigna	0.75	[-36.98,	-1.12]	[-0.90,	-1.12]	-0.90	[-1.07,	-1.12]
Blue Shield	0.57	[-92.93,	4.30]	[-1.23,	2.79]		[-1.05,	3.16]
Blue Cross	0.38	[-,	2.00]	[-3.11,	1.64]		[-2.89,	1.55]
$p(\cdot) = (1 - \hat{d}_{\pi,h}^2)lp(c_i, h)$								
Pacificare	0.97	[-,	-0.98]	[-1.67,	-0.98]		[-1.69,	-0.98]
Aetna	0.91	[-,	-2.40]	[-2.76,	-2.40]		[-2.85,	-2.40]
Health Net	0.80	[-,	-0.61]	[-1.96,	-0.61]		[-2.01,	-0.61]
Cigna	0.75	[-49.56,	-0.90]	[-1.00,	-0.90]		[-1.13,	-0.90]
Blue Shield	0.57	[-68.67,	28.71]	[-0.92,	3.03]		[-0.96,	3.33]
Blue Cross	0.38	[-,	1.87]	[-2.99,	1.63]		[-2.96,	1.61]

Notes: Results of inequalities analysis. We include 157 hospitals in total. Estimated coefficient is the ratio of the price coefficient to the distance coefficient in the utility equation, where prices are measured in \$000 and distance in tens of miles. Price measures are defined in first column. "No price instruments" includes four distance-based instruments (positive and negative parts of $d(i_h, h) - d(i_h, h')$ for each patient) plus a constant in the instrument set. "Same price" instruments adds four analogously-defined instruments based on the relevant price measure. "Other price" instruments replaces these with instruments based on the price variable calculated with the "other" discount ($\hat{d}_{\pi,h}^2$ in the first panel and $\hat{d}_{\pi,h}^1$ in the second panel).

Appendix: Categorization of Co-Morbidities by Severity

We asked obstetrical experts at Columbia Presbyterian Hospital to assign a rank to each co-morbidity listed in our discharge data covering privately insured patients admitted for a labor/birth episode in California in 2003. Ranks were numbered from 1 to 3, where 1 indicated a routine diagnosis that would not affect patient treatment in any significant way, 2 indicated a more severe diagnosis and 3 indicated the most severe conditions that would have a substantial effect on the patient's treatment during the labor/birth admission. The list of diagnoses and their assigned ranks is given below. The number of patients with each co-morbidity is also provided. (A single patient may have more than one co-morbidity.)

Diagnosis	# patients	% patients	Rank (1-3)
1. Tuberculosis	9	0	3
2. Septicemia (except in labor)	42	0.02	2
3. Bacterial infection; unspecified sit	668	0.32	2
4. Mycoses	28	0.01	2
6. Hepatitis	119	0.06	2
7. Viral infection	643	0.3	2
8. Other infections; including parasiti	70	0.03	2
9. Sexually transmitted infections (not	19	0.01	2
10. Immunizations and screening for inf	12,523	5.93	1
22. Melanomas of skin	10	0	3
23. Other non-epithelial cancer of skin	6	0	3
24. Cancer of breast	18	0.01	3
26. Cancer of cervix	14	0.01	3
28. Cancer of other female genital orga	2	0	3
32. Cancer of bladder	1	0	3
33. Cancer of kidney and renal pelvis	2	0	3
35. Cancer of brain and nervous system	5	0	3
36. Cancer of thyroid	24	0.01	3
37. Hodgkins disease	8	0	3
38. Non-Hodgkins lymphoma	5	0	3
39. Leukemias	3	0	3
41. Cancer; other and unspecified prima	4	0	3
44. Neoplasms of unspecified nature or	14	0.01	3
46. Benign neoplasm of uterus	1,110	0.53	1
47. Other and unspecified benign neopla	275	0.13	1
48. Thyroid disorders	1,266	0.6	2
49. Diabetes mellitus without complicat	9	0	2
50. Diabetes mellitus with complication	35	0.02	3
51. Other endocrine disorders	81	0.04	2
52. Nutritional deficiencies	22	0.01	1
53. Disorders of lipid metabolism	11	0.01	2
55. Fluid and electrolyte disorders	554	0.26	2
56. Cystic fibrosis	1	0	3
57. Immunity disorders	8	0	2
58. Other nutritional; endocrine; and m	703	0.33	2
59. Deficiency and other anemia	1,542	0.73	1
60. Acute posthemorrhagic anemia	215	0.1	2
61. Sickle cell anemia	59	0.03	3
62. Coagulation and hemorrhagic disorde	338	0.16	2
63. Diseases of white blood cells	37	0.02	2
64. Other hematologic conditions	9	0	2
76. Meningitis (except that caused by t	9	0	3
77. Encephalitis (except that caused by	1	0	3

Diagnosis	# patients	% patients	Rank (1-3)
78. Other CNS infection and poliomyelit	3	0	3
79. Parkinsons disease	2	0	3
80. Multiple sclerosis	28	0.01	3
81. Other hereditary and degenerative n	10	0	3
82. Paralysis	8	0	3
83. Epilepsy; convulsions	146	0.07	3
84. Headache; including migraine	174	0.08	1
85. Coma; stupor; and brain damage	6	0	3
87. Retinal detachments; defects; vascu	5	0	2
88. Glaucoma	3	0	2
89. Blindness and vision defects	17	0.01	2
90. Inflammation; infection of eye (exc	10	0	1
91. Other eye disorders	4	0	1
92. Otitis media and related conditions	16	0.01	1
93. Conditions associated with dizzines	27	0.01	1
94. Other ear and sense organ disorders	21	0.01	1
95. Other nervous system disorders	103	0.05	2
96. Heart valve disorders	540	0.26	3
97. Peri-; endo-; and myocarditis; card	19	0.01	3
98. Essential hypertension	581	0.27	2
99. Hypertension with complications and	18	0.01	3
101. Coronary atherosclerosis and other	1	0	3
102. Nonspecific chest pain	21	0.01	2
103. Pulmonary heart disease	7	0	3
104. Other and ill-defined heart diseas	12	0.01	3
105. Conduction disorders	28	0.01	3
106. Cardiac dysrhythmias	193	0.09	3
107. Cardiac arrest and ventricular fib	2	0	3
108. Congestive heart failure; nonhyper	1	0	3
114. Peripheral and visceral atheroscle	3	0	3
117. Other circulatory disease	187	0.09	2
118. Phlebitis; thrombophlebitis and th	74	0.04	2
119. Varicose veins of lower extremity	4	0	1
120. Hemorrhoids	186	0.09	1
121. ther diseases of veins and lymphat	18	0.01	2
122. Pneumonia (except that caused by t	66	0.03	2
123. Influenza	21	0.01	1
125. Acute bronchitis	13	0.01	1
126. Other upper respiratory infections	190	0.09	1
129. Aspiration pneumonitis; food/vomit	6	0	2
130. Pleurisy; pneumothorax; pulmonary	42	0.02	3
131. Respiratory failure; insufficiency	12	0.01	3
133. Other lower respiratory disease	79	0.04	2
134. Other upper respiratory disease	19	0.01	2
135. Intestinal infection	37	0.02	1
136. Disorders of teeth and jaw	5	0	1
138. Esophageal disorders	101	0.05	2
139. Gastroduodenal ulcer (except hemor	1	0	2
140. Gastritis and duodenitis	24	0.01	1
141. Other disorders of stomach and duo	13	0.01	1
142. Appendicitis and other appendiceal	67	0.03	2
143. Abdominal hernia	94	0.04	1

Diagnosis	# patients	% patients	Rank (1-3)
144. Regional enteritis and ulcerative	55	0.03	2
145. Intestinal obstruction without her	41	0.02	2
146. Diverticulosis and diverticulitis	2	0	2
147. Anal and rectal conditions	16	0.01	1
148. Peritonitis and intestinal abscess	8	0	3
149. Biliary tract disease	401	0.19	2
151. Other liver diseases	84	0.04	2
152. Pancreatic disorders (not diabetes)	41	0.02	2
153. Gastrointestinal hemorrhage	12	0.01	3
154. Noninfectious gastroenteritis	61	0.03	1
155. Other gastrointestinal disorders	390	0.18	2
156. Nephritis; nephrosis; renal sclero	11	0.01	2
157. Acute and unspecified renal failur	8	0	3
158. Chronic renal failure	2	0	3
159. Urinary tract infections	838	0.4	1
160. Calculus of urinary tract	216	0.1	1
161. Other diseases of kidney and urete	191	0.09	2
162. Other diseases of bladder and uret	15	0.01	2
163. Genitourinary symptoms and ill-def	97	0.05	1
167. Nonmalignant breast conditions	14	0.01	1
168. Inflammatory diseases of female pe	837	0.4	1
169. Endometriosis	94	0.04	1
170. Prolapse of female genital organs	3	0	1
171. Menstrual disorders	5	0	1
172. Ovarian cyst	297	0.14	1
173. Menopausal disorders	3	0	1
174. Female infertility	6	0	1
175. Other female genital disorders	448	0.21	1
176. Contraceptive and procreative mana	5,442	2.58	1
177. Spontaneous abortion	20	0.01	1
178. Induced abortion	9	0	1
179. Postabortion complications	98	0.05	2
180. Ectopic pregnancy	11	0.01	2
181. Other complications of pregnancy	16,871	7.99	2
182. Hemorrhage during pregnancy; abrup	755	0.36	3
183. Hypertension complicating pregnanc	2,388	1.13	2
184. Early or threatened labor	3,223	1.53	2
185. Prolonged pregnancy	5,103	2.42	1
186. Diabetes or abnormal glucose toler	3,501	1.66	2
187. Malposition; malpresentation	3,375	1.6	1
188. Fetopelvic disproportion; obstruct	3,061	1.45	2
189. Previous C-section	2,592	1.23	1
190. Fetal distress and abnormal forces	2,586	1.22	1
191. Polyhydramnios and other problems	5,086	2.41	2
192. Umbilical cord complication	10,393	4.92	1
193. OB-related trauma to perineum and	3,157	1.49	1
194. Forceps delivery	273	0.13	1
195. Other complications of birth; puer	26,576	12.58	1
196. Normal pregnancy and/or delivery	83,408	39.48	1
197. Skin and subcutaneous tissue infec	66	0.03	1
198. Other inflammatory condition of sk	92	0.04	1
200. Other skin disorders	182	0.09	1

Diagnosis	# patients	% patients	Rank (1-3)
201. Infective arthritis and osteomyeli	2	0	2
202. Rheumatoid arthritis and related d	5	0	2
203. Osteoarthritis	2	0	1
204. Other non-traumatic joint disorder	23	0.01	1
205. Spondylosis; intervertebral disc d	212	0.1	1
206. Osteoporosis	3	0	2
208. Acquired foot deformities	3	0	1
209. Other acquired deformities	6	0	1
210. Systemic lupus erythematosus and c	7	0	2
211. Other connective tissue disease	93	0.04	2
212. Other bone disease and musculoskel	35	0.02	2
213. Cardiac and circulatory congenital	42	0.02	2
214. Digestive congenital anomalies	2	0	2
215. Genitourinary congenital anomalies	240	0.11	2
216. Nervous system congenital anomalie	5	0	2
217. Other congenital anomalies	47	0.02	2
218. Liveborn	1	0	1
219. Short gestation; low birth weight;	2	0	2
224. Other perinatal conditions	6	0	2
225. Joint disorders and dislocations;	5	0	2
226. Fracture of neck of femur (hip)	2	0	2
228. Skull and face fractures	3	0	2
229. Fracture of upper limb	9	0	2
230. Fracture of lower limb	8	0	2
231. Other fractures	15	0.01	2
232. Sprains and strains	21	0.01	1
233. Intracranial injury	6	0	3
234. Crushing injury or internal injury	6	0	3
235. Open wounds of head; neck; and tru	5	0	2
236. Open wounds of extremities	3	0	2
237. Complication of device; implant or	21	0.01	2
238. Complications of surgical procedur	138	0.07	2
239. Superficial injury; contusion	55	0.03	1
240. Burns	2	0	2
242. Poisoning by other medications and	5	0	2
244. Other injuries and conditions due	45	0.02	2
245. Syncope	27	0.01	2
246. Fever of unknown origin	58	0.03	2
247. Lymphadenitis	5	0	2
249. Shock	3	0	3
250. Nausea and vomiting	32	0.02	1
251. Abdominal pain	185	0.09	1
252. Malaise and fatigue	15	0.01	1
253. Allergic reactions	194	0.09	2
255. Administrative/social admission	13	0.01	1
256. Medical examination/evaluation	1	0	1
257. Other aftercare	37	0.02	1
259. Residual codes; unclassified	1,537	0.73	1
650. Adjustment disorders	11	0.01	1
651. Anxiety disorders	129	0.06	1
652. Attention-deficit, conduct, and di	3	0	1
654. Developmental disorders	2	0	1

Diagnosis	# patients	% patients	Rank (1-3)
655. Disorders usually diagnosed in inf	1	0	1
657. Mood disorders	397	0.19	2
658. Personality disorders	5	0	2
659. Schizophrenia and other psychotic	8	0	2
660. Alcohol-related disorders	13	0.01	2
661. Substance-related disorders	164	0.08	2
663. Screening and history of mental he	410	0.19	1
670. Miscellaneous disorders	684	0.32	2